

Kinetic Modelling of Cobalt-Catalyzed Propene Hydroformylation: A Combined *Ab Initio* and Experimental Fitting Protocol

Luxuan Guo and Jeremy N. Harvey*

Department of Chemistry, KU Leuven, Celestijnenlaan 200F, B-3001 Leuven, Belgium

KEYWORDS Hydroformylation, cobalt, homogeneous catalysis, computational chemistry, kinetic modeling, fitting, reaction mechanism

ABSTRACT Kinetic modelling of catalytic reaction systems can yield detailed insight into mechanisms, enabling in particular the identification of rate- and turnover-limiting steps. Empirical models fitted to observed kinetics do not always unambiguously resolve the microscopic nature of the mechanism, while *ab initio* models with rate constants derived from statistical rate theories and quantum chemistry invariably lead to mismatches between predicted and observed rates, sometimes even to the extent that the dependence of the rate on key variables such as temperature or concentration is incorrect. We have shown previously that when using accurate quantum chemical methods, agreement with experiment of *ab initio* kinetic models can be good, and can be further improved by performing limited fitting of the *ab initio* values. Here we show that a detailed assessment of the remaining mismatches with experiment combined with a careful fitting protocol and with additional quantum chemical calculations can yield much improved accuracy and improved microscopic understanding of the reaction mechanism, for the important test case of propene hydroformylation by $\text{Co}_2(\text{CO})_8$.

Introduction

The traditional approach to understanding catalytic reaction mechanisms with quantum chemical methods relies on computation of potential energy surfaces and, through the use of statistical mechanics methods, of the corresponding Gibbs energy surfaces.¹⁻¹⁵ For complex systems involving many intermediates and many elementary steps, however, these surfaces do not always reveal the full story. Kinetic modelling of some or other variety has been shown to yield far more insight, e.g. enabling one to identify rate- and turnover-limiting steps.^{1, 13-22} In our group, we have been combining quantum chemistry with kinetic modelling for several years. Based on calculated activation Gibbs energies from quantum chemical calculations we compute the rate constants for individual elementary steps based on transition state theory (TST), followed by integrating the kinetic rate equations to predict the kinetics of reaction networks, which can then be used to compare with the experimental data. We have in particular used versions of this approach in two studies of the hydroformylation of propene catalyzed by $\text{HCo}(\text{CO})_4$.^{23, 24} In both studies, through use of very accurate CCSD(T)-F12 electronic energies, as well as careful attention to issues such as standard-state corrections and the diffusion-controlled nature of some reaction steps, we were able to obtain very good agreement with experiment,²⁵ within better than a factor of ten for predicted rates for a wide range of experimental conditions. Other literature studies have also managed to reproduce qualitative or quantitative features of observed reactivity using this same sort of approach.²⁶⁻³⁴ Nevertheless, kinetic models based on quantum-chemical methods invariably lead to some degree of mismatch between predicted and observed rates, and our published models also show such shortcomings.

How do we understand these differences between theoretically-predicted kinetics and experimental observations? The question is in principle so broad as to not be directly answerable: there are too many possible sources of error in the theory, such as the quantum chemical level, the approximations within the statistical mechanics and rate theory, the solvent treatment, and so on. Even quite small errors in calculated relative Gibbs energies can cause big errors in rate constants due to the exponential nature of the relation between these quantities. In favorable cases, these errors only change the predicted kinetics quantitatively (the predicted rate is wrong by some – perhaps even quite large – factor). In this case, provided that the model captures the key qualitative observations correctly, which is quite often the case,²⁶⁻³⁵ then the kinetic model based on the ‘raw’ quantum chemical Gibbs energies is still sufficient to understand the chemistry and to provide further insight compared to the quantum-chemical results alone.

However, the errors can also be qualitative, such that some important feature of the kinetics (for example the dependence of the rate on temperature or concentration of a key species, or the nature of the main product) is not correctly reproduced by the model. Such qualitative errors can occur for many reasons, such as the above-mentioned ones that affect the accuracy of the calculated Gibbs energies. A more pernicious source of error is missing steps in the modelled mechanism: one or several intermediates or TSs have been omitted from the quantum-chemical modelling. In these cases, attempts to correct the model are needed. This can be done through a combination of chemical intuition and manual inspection of the model and the experimental results, leading to elaboration of a revised model which may include additional intermediates or reaction steps, or may include a significantly revised Gibbs energy for one or more key species. Automated potential energy surface exploration techniques can also assist in this respect.³⁶⁻⁴¹ In some cases, this model revision step may also involve dialogue with the group having performed the experimental work leading to new experiments or to a revision of the experimental data, which can also be subject to error. If the revised model now only has quantitative mismatches with experiment, then one returns to the above situation where the kinetic modelling can be considered to have fulfilled its mission. An example of this iterative approach was our study of the cis-trans isomerization of alkenes, where initial quantum chemical models based on catalysis by a monomeric palladium species failed to account for observed reactivity, with experimental observations leading to a revised model in which a binuclear palladium complex performs the catalysis.⁴²

We note that the literature discussing the impact of electronic structure theory errors on kinetic models is more advanced in some other areas of computational chemistry, particularly heterogeneous catalysis, where detailed analysis of similar qualitative disagreement between theory and experiment has e.g. been used to conclude that catalysis is not predominantly performed by perfect low crystallographic index catalysts surfaces, as in the quantum-chemical models, but instead by other surfaces or at defect sites.⁴³ These studies have also emphasized that correlation between errors in predicted Gibbs energies of structurally related species plays a large role in determining the nature of errors in predicted kinetics. Also in computational modelling of combustion chemistry, detailed analysis of uncertainty resulting from inaccurate reaction parameters has been performed, with the role of error correlation also being explored in detail.⁴⁴

In this study, we show that detailed numerical examination of the quantitative mismatch between predicted and observed rates, and numerical fitting of the model to experiment, can itself directly

yield additional insight that can lead to a revised model and to improved agreement with experiment. We return to the already mentioned case that has been previously studied in our group and which is characterized by the availability of high-accuracy quantum-chemical results as well as of quite systematic experimental data for rate as a function of several variables including temperature as well as concentration of catalyst and reagents.²³⁻²⁵ This is the cobalt-catalyzed hydroformylation of propene by $\text{Co}_2(\text{CO})_8$ whose kinetics have been studied experimentally in some detail.²⁵ We will show that exploration of the remaining errors in our previous kinetic models, involving numerical fitting to experimental results, can lead to new mechanistic hypotheses and a much-improved agreement with experiment.

The first of our proposed models for this reaction accounts quite well for reactivity and for the dependence of rate on the reactants and catalysts concentrations, even for the ‘raw’ model based directly on the quantum-chemical results.²³ In this sense, this was a model that could be described as having only quantitative errors with respect to experiment. However, in this model, no attempt was made to predict the linear to branched selectivity of the reaction, and the temperature dependence of the rate of catalysis was also not modelled. These limitations motivated a second study, which can be viewed as a manual cycle of model revision as described above, in which additional steps were added and improvements in the theoretical protocol were made, leading to an improved model.²⁴ This revised model can account reasonably well for both the linear to branched selectivity, and the temperature dependence of the rate. Nevertheless, it still has some quite significant errors with respect to experiment, some of which, such as the nature of the predicted dependence of rate on carbon monoxide pressure, are best described as being qualitative errors using the nomenclature mentioned above.

For both models, as well as reporting the ‘raw’ kinetic model based on the quantum-chemical/statistical mechanics Gibbs energies as obtained, we included in our published reports the results of partially fitted models, in which modest adjustments to the calculated Gibbs energies were introduced in order to improve the quantitative agreement with experiment. Only modest adjustments were made, as our philosophy was that we had performed quantum-chemical work that was as accurate as possible, and that remaining errors on that level should be quite small.

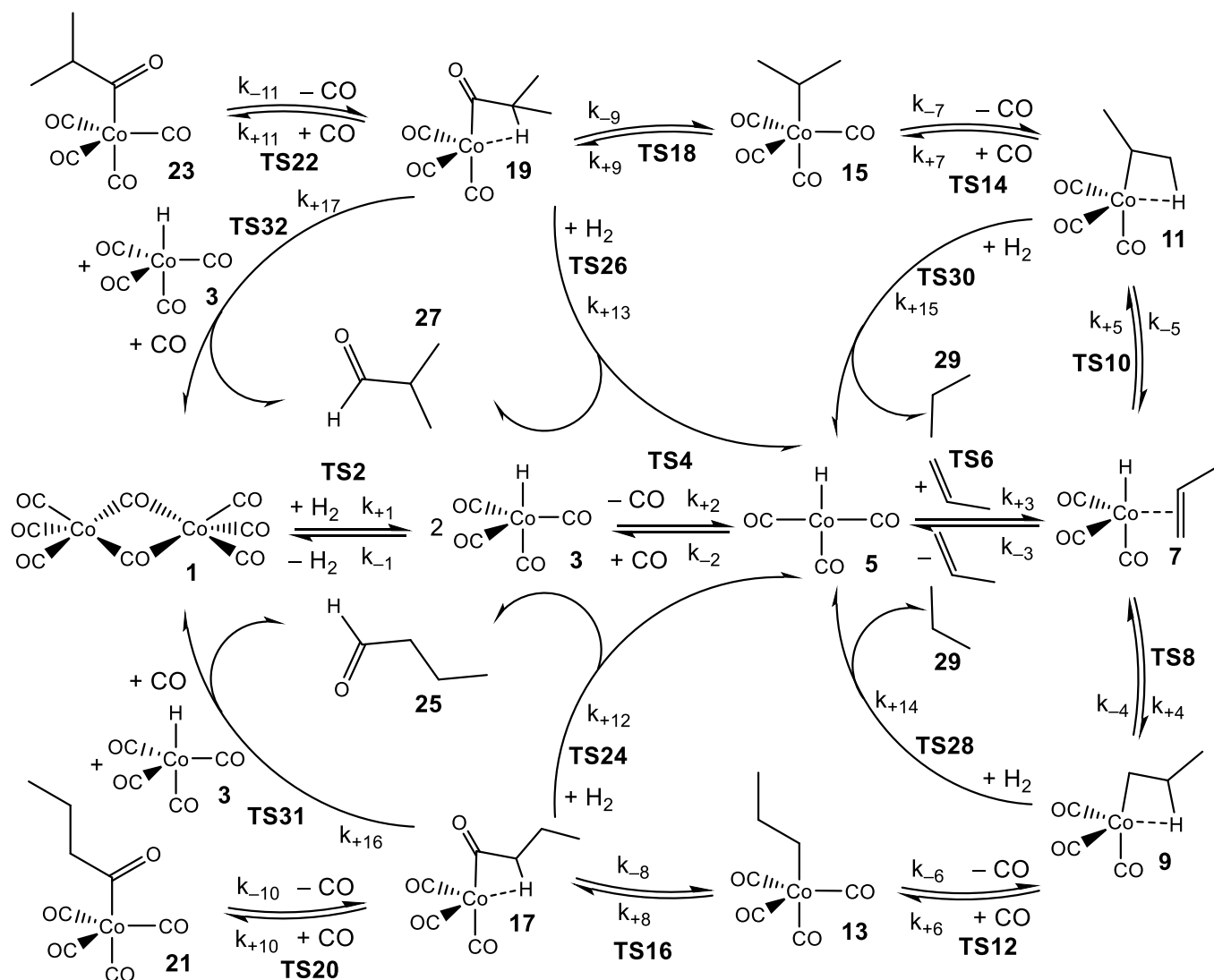
In the present study, we set out to see whether more aggressive fitting of the kinetic model to the experiment can help to highlight more severe mismatches between experiment and quantum

chemistry and thereby lead to a revision of the quantum-chemical model, and hence yield better insight.

Results and Discussion

As in our previous work, we explore the mechanism of propene hydroformylation by $\text{Co}_2(\text{CO})_8$, using a combination of quantum-chemistry, kinetic modelling, and reference to experimental kinetics. The approach used initially closely mirrors that already described:²⁴ first, the potential energy surfaces for the considered elementary steps are explored, leading to structures and energies for reactants, products, intermediates, and transition states. Where possible, the energies are based on very accurate explicitly correlated coupled-cluster theory, while for some species, density functional theory methods are used instead. Based on the structures, energies, rotational constants and vibrational frequencies, standard ideal gas statistical mechanics expressions are used to predict the ‘raw’ *ab initio* Gibbs energies for the different species, at the three temperatures of 110, 130 and 150 °C that were used in the experimental studies.²⁵ A linear fit of these Gibbs energies to the equation $\Delta G = \Delta H - T\Delta S$ is then used to derive enthalpies and entropies for the different species and transition states in the modelled catalytic cycle, with standard enthalpies and entropies assumed to be temperature-independent. The ΔH and ΔS values obtained in this way are referred to as the ‘raw’ *ab initio* values, and a full list of these values is included in the supporting information.

These ‘raw’ values are then used to generate a zero-th order kinetic model of the catalytic transformation. A first step in obtaining this model involved manual mechanism reduction, whereby consecutive steps involving low barriers are ‘folded in’ to preceding or following steps and thereby treated as single steps. The reduced kinetic model is shown in Scheme 1.



Scheme 1. Reduced kinetic model for the mechanism of propene hydroformylation by $\text{Co}_2(\text{CO})_8$.

Then, at each temperature, the Gibbs energies for each species are obtained using $\Delta G = \Delta H - T\Delta S$, and Gibbs energies of activation are used together with the Eyring equation to calculate forward and reverse rate constants. For some reaction steps, typically ligand addition to coordinatively unsaturated cobalt complexes, for which no potential energy barrier occurs, the rate constant is computed not from *ab initio* Gibbs energies for the TS, but instead from a simple equation for rate constants of diffusion-limited reactions, with as parameters the solvent viscosity and the temperature.²⁴ These values are obtained at the three temperatures mentioned above, then the Eyring equation is inverted to yield an ‘activation Gibbs energy’, and in the same way as above, a linear fit of these Gibbs energies provides standard values of the enthalpy and entropy of the

associated barrierless transition states. For these steps, the rate constants for the reverse reactions are obtained from the rate constants for the forward reactions, the statistical mechanics-predicted equilibrium constants, and detailed balance. A further comment needs to be made concerning the steps leading to formation of butyraldehyde or propane, involving TSs 24, 26, 28, 30, 31, 32 in Scheme 1. In principle, these steps are reversible, and indeed some synthetic applications make use of reverse hydroformylation.^{45,46} Based on the *ab initio* free energies for *n*- and *iso*-butyraldehyde, propene, H₂ and CO (see supporting information), and on the various experimental pressures of CO and H₂ used in the reaction,²⁵ the *lowest* predicted ratio of the equilibrium concentrations of *n*-butyraldehyde and propene is larger than 100, making the reaction essentially irreversible. For this reason, and for convenience in the modelling, we treat these reactions as being irreversible, i.e. we set the reverse rate constants to zero.

Based on the whole set of rate constants, the kinetic equations are propagated, holding the partial pressures of CO and H₂ and the concentration of propene fixed, until steady-state is reached (the experimental measurements were carried out at steady-state; the partial pressures of CO and H₂ and the concentration of propene were in large excess so were effectively constant). The resulting predicted rates for formation of the two main products, linear *n*-butyraldehyde and the branched isomer *iso*-butyraldehyde are then obtained, and can be compared directly to experimentally observed rates under a range of different experimental conditions (including variation of the temperature, the concentrations of catalyst and of propene, and the partial pressures of reagents H₂ and CO).

The accuracy of the kinetic model can be assessed in a number of ways; for the purposes of this study, we find that the most useful metric is the root mean-square (RMS) error χ of the predicted rates (or more precisely of the ratio of the calculated and observed rates, $\chi^2 = 1/N \sum_i ((R_{i,pred} - R_{i,exp})/R_{i,exp})^2$ where the sum runs over the N different experimental conditions, and $R_{i,pred}$ and $R_{i,exp}$ correspond to the predicted and experimental rates under those conditions) under the different experimental conditions, as used before,²⁴ though we also consider two other metrics: the first of these is the maximum deviation between predicted and experimental rates, taken as the absolute value of the natural logarithm of the ratio R_{pred}/R_{exp} , i.e. $|\ln R_{pred}/R_{exp}|$. A value of 1 for this metric indicates that one of the predicted rates differs from experiment by a factor 2.72 (either too large or too small). The second new metric is qualitative: the agreement of the shape of the curve of predicted rates as a function of the different variables with that observed

experimentally. Following assessment of the zero-th order model, modified models are generated by changing the zero-th order enthalpies and entropies of the different species and transition states, and seeking to minimize the RMS error. These changes are performed using various constraints, as described below. Finally, where a large mismatch between the raw enthalpy or entropy and the fitted value is obtained, the quantum chemical calculated values are reinvestigated. The starting point is the same zero-th order model as used before,²⁴ which we refer to here as model ‘M0’ (Table S1), and which leads to an RMS error on predicted rates of 69.5%. This represents rather high accuracy considering that the rate constants are based on ‘raw’ unadjusted quantum chemical values, and remembering that at 150 °C, an error in Gibbs energy of 2.5 kJ mol⁻¹ is sufficient to cause a change in a rate constant or equilibrium constant by a factor of 2, so the average agreement on rate with mean errors of $\pm 69.5\%$ suggests that our *ab initio* protocol for the key steps delivers an average accuracy of this order of magnitude. Still, the model does include some qualitative errors, notably for the dependence of the rate on temperature and on partial pressure of CO (Figure 1). Also, the metric $|\ln R_{\text{pred}}/R_{\text{exp}}|_{\text{max}}$ is quite large, at 3.24, indicating that one of the rates is incorrect by a factor $\exp(3.24)$ or about 25.5 – which suggests that at least one of the Gibbs energies in the model is wrong by more than 10 kJ mol⁻¹.

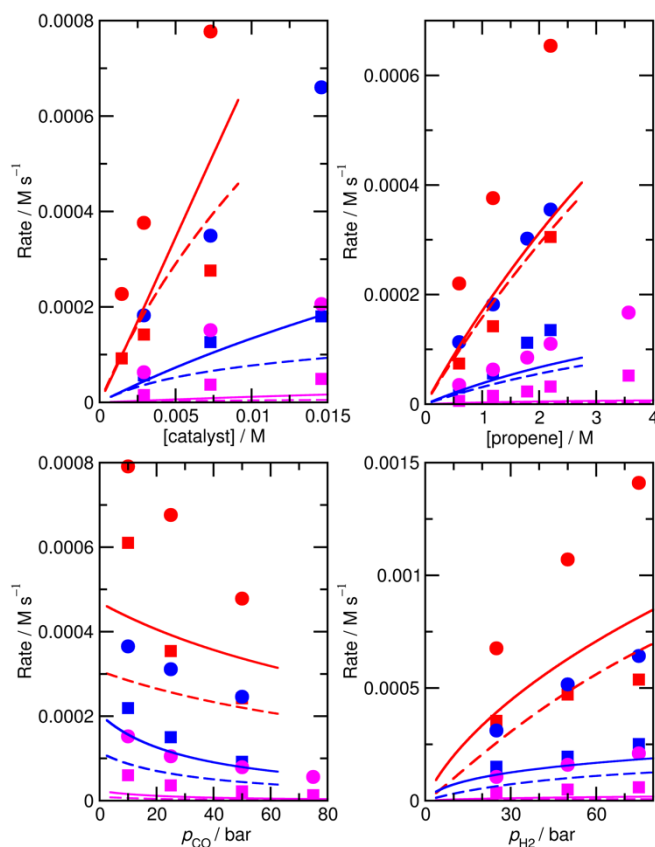


Figure 1. Predicted (lines) and experimental (points) rates for formation of *n*-butyraldehyde and *iso*-butyraldehyde under a range of different experimental conditions for M0. Experimental conditions: Top left: $p_{\text{CO}}=p_{\text{H}_2}=50$ bar, $[\text{propene}]=1.19$ M; Top right: $p_{\text{CO}}=p_{\text{H}_2}=50$ bar, $[\text{catalyst}]=0.00292$ M; Bottom left: $p_{\text{H}_2}=25$ bar, $[\text{catalyst}]=0.0073$ M, $[\text{propene}]=1.19$ M; Bottom right: $p_{\text{CO}}=25$ bar, $[\text{catalyst}]=0.0073$ M, $[\text{propene}]=1.19$ M. Red, 423 K; Blue, 403 K; Magenta, 383 K. Experimental rates for formation of *n*-butyraldehyde are shown as circles, and for *iso*-butyraldehyde as squares. Calculated rates for formation of *n*-butyraldehyde are shown as solid lines, and for *iso*-butyraldehyde as dashed lines.

Therefore, we aim to improve our kinetic model by carrying out modifications of the zero-th order enthalpies and entropies of the different species and transition states, and seeking to minimize the RMS error. In our earlier study,²⁴ tight constraints were used with a maximum change of *ab initio* enthalpy and entropy values of 4 kJ mol^{-1} and $0.035 \text{ kJ mol}^{-1} \text{ K}^{-1}$. The maximum entropy change is equivalent to a change in Gibbs energy of $13 - 15 \text{ kJ mol}^{-1}$ for the temperatures of $383 - 423 \text{ K}$ modelled here. The modesty of the allowed changes was motivated by the high accuracy of CCSD(T) and of the initial M0 kinetic model, with the entropies considered to be more uncertain. Fitting with these allowed changes led to a best fit RMS error of 22%.²⁴ Here, we repeated the fitting by allowing enthalpies and entropies for the same species **1**, **TS2**, **TS4**, **TS6**, **TS12**, **TS14**, **TS31**, **TS32** (species whose values have a higher uncertainty due to there being no CCSD(T) energies available or due to uncertainty in assigning rate constants for diffusion-limited reactions) to change, but with a more balanced maximum change of *ab initio* enthalpy and entropy values of 6 kJ mol^{-1} and $0.02 \text{ kJ mol}^{-1} \text{ K}^{-1}$. The maximum entropy change is equivalent to a change in Gibbs energy of around 8 kJ mol^{-1} for the temperatures of $383 - 423 \text{ K}$. In this fitting, we performed very thorough Monte-Carlo exploration of the space of H and S values in order to check that the optimum parameters had been found. This yields a best-fit RMS error of 22.7%, similar to the earlier result.²⁴ The fitted ΔH , ΔS , and ΔG values and change with respect to *ab initio* values for this M1 model can be found in supporting information (Table S2). As in the previous study, this model yields much improved agreement with experiment particularly with regard to the dependence of rate on temperature (Fig. S1). However, qualitatively, as for the fitted model in the previous study,²⁴ this model still shows a significant error related to the predicted rate dependence

for product formation on the partial pressure of CO. Also, $|\ln R_{\text{pred}}/R_{\text{exp}}|_{\text{max}}$ remains quite large at 0.96.

To check that the species for which ΔH and ΔS had been varied were indeed the key species, we then calculated the derivative of the RMS error with respect to ΔH and ΔS for all species for M0, $\partial\chi/\partial\Delta H$ and $\partial\chi/\partial T\Delta S$ (Table S3). Both metrics yield similar info, so we used only $\partial\chi/\partial\Delta H$ to identify ‘important’ species (those where this metric is larger than 0.001, plus any *n* or *iso* counterpart where applicable). These species are **1, TS4, TS6, TS12, 13, TS14, 15, 21, 23, TS24, TS26, TS31, TS32**. Then we again performed very thorough Monte-Carlo fitting by allowing these species to change and with a maximum change of *ab initio* enthalpy and entropy values of 6 kJ mol⁻¹ and 0.02 kJ mol⁻¹ K⁻¹. This yields a best-fit model M2 (Table S4) with a RMS error of 20.2%, slightly improved over M1, but the predicted rate dependence on the partial pressure of CO is not improved at all and $|\ln R_{\text{pred}}/R_{\text{exp}}|_{\text{max}}$ remains quite large at 1.06 (Figure 2).

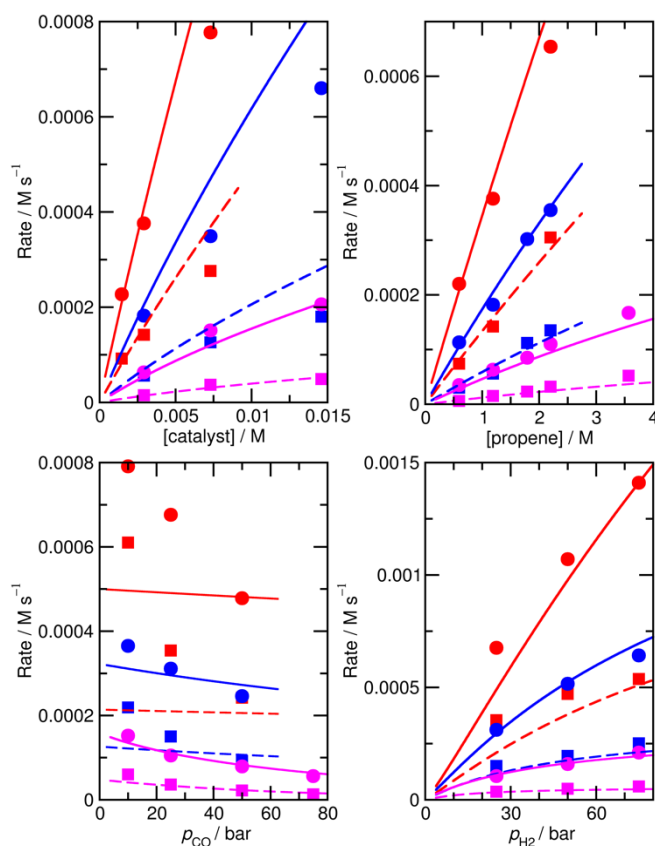


Figure 2. Predicted (lines) and experimental (points) rates for formation of *n*-butyraldehyde and *iso*-butyraldehyde under a range of different experimental conditions for M2. See Fig. 1 for full reaction conditions.

These additional Monte-Carlo fittings confirm that a qualitatively accurate model (defined as having low RMS error, low maximum error, and correct dependence of rate on all experimental variables) cannot be found while maintaining Gibbs energies that match those obtained from the *ab initio* calculations within tight constraints. Therefore, we examined what would occur if we completely removed all constraints on the calculated enthalpy and entropy. Initially, this was done intuitively and by trial and error by carrying out a series of unconstrained Monte-Carlo fittings, leading as expected to major changes in ΔH and ΔS for many species and to unphysical relative Gibbs energy values and rate constants. Instead of a Monte Carlo search, we also implemented an unconstrained gradient-based minimization algorithm to minimize the RMS error from the raw *ab initio* values in order to obtain more accurate location of minima, with the enthalpy and entropy values for all the species being allowed to vary. This led to a new model, ‘M3’ (Fig. S2, Table S5), with a much lower RMS error of 7.8%, excellent dependence on CO partial pressure, and $|\ln R_{\text{pred}}/R_{\text{exp}}|_{\text{max}}$ decreased to 0.23 (a maximum error by a factor of 1.3). An RMS error of the order of 8% starts to approach the type of accuracy that might be expected from the experimental study itself. Indeed, in the experimental study,²⁵ a two-parameter empirical rate law was fitted to the experimental data, with separate fits at each of the temperatures, and this fit yielded agreement within 7%, so a fit achieving errors within 8% while relying on a first-principles model with a unique set of parameters for all temperatures probably represents something quite close to the maximum accuracy that can be expected.

The parameters in M3 include major changes in ΔH and ΔS and relative Gibbs energies for many species, leading to values that are in some cases unphysical (Table S5). Clearly, the unconstrained fit of M3 is unrealistic in terms of the underlying elementary rate constants. Nevertheless, the significant improvement in the quality of the fit discussed above does suggest that M3, despite the unphysical values of some of the individual rate constants, may nevertheless capture the correct behavior of the whole kinetics for the right reasons in the broad sense.

For this reason, we decided to investigate if nearly equivalent results could be obtained by carrying out partially unconstrained gradient-based minimization from the raw *ab initio* values, where we only allowed a small subset of enthalpies and entropies, which impact most significantly on the modelled rates, to vary without constraints but kept the values for other less important species fixed. Again, we use the absolute value of $\partial\chi/\partial\Delta H$ as a criterion for importance, retaining species where this metric exceeds 0.01, plus any *n/iso* counterpart, yielding species **1**, **TS4**, **TS6**,

TS24, TS26. Optimization of these yields model M4 (Figure 3 and Table 1), still with a low RMS error of 13.3%, and $|\ln R_{\text{pred}}/R_{\text{exp}}|_{\text{max}}$ of 0.42 (a maximum error by a factor of 1.5). This model again yields a qualitatively essentially correct dependence on the partial pressure of CO.

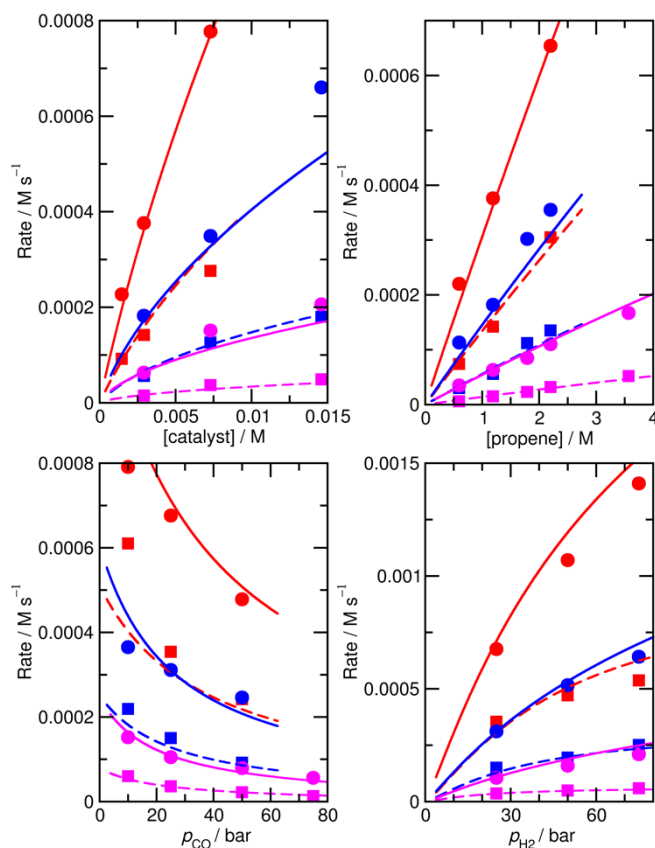


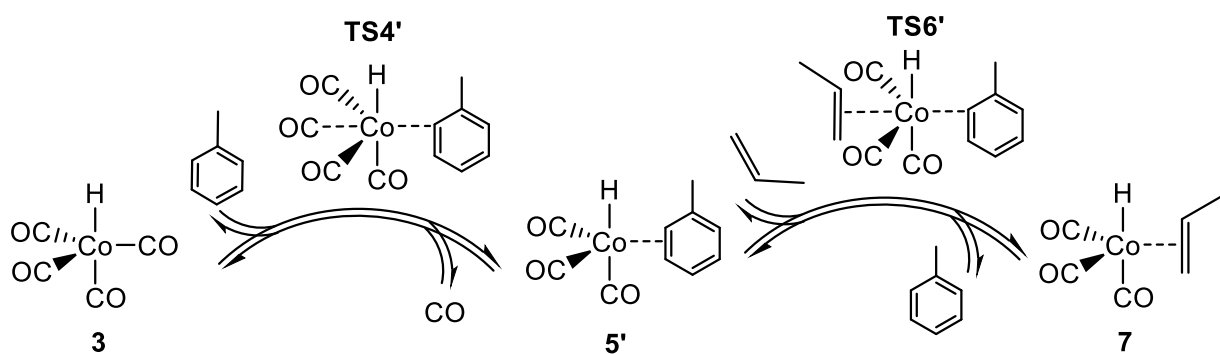
Figure 3. Predicted (lines) and experimental (points) rates for formation of *n*-butyraldehyde and *iso*-butyraldehyde under a range of different experimental conditions for M4. See Fig. 1 for full reaction conditions.

Table 1 shows that the properties of **TS6**, the TS for addition of propene to $\text{HCo}(\text{CO})_3$, undergoes substantial changes in ΔH and ΔS upon fitting, with the enthalpy and entropy going down by 116.8 kJ mol^{-1} and 0.278 $\text{kJ mol}^{-1} \text{K}^{-1}$, respectively. These changes partly cancel out in the resulting Gibbs energies, which thereby changes relatively little, with ΔG only decreasing by 10.2 kJ mol^{-1} at 383 K.

Table 1. The fitted ΔH (kJ mol^{-1}), ΔS ($\text{kJ mol}^{-1} \text{K}^{-1}$), and ΔG (kJ mol^{-1} , $T = 383 \text{ K}$) values and change with respect to the ‘raw’ *ab initio* values for M4.

Species	ΔH (fitted and change)		ΔS (fitted and change)		ΔG (fitted and change)	
1	-91.6	-73.6	-0.157	-0.168	-31.6	-9.4
TS4	149.9	-0.8	0.158	0.061	89.5	-24.0
TS6	37.2	-116.8	-0.144	-0.278	92.3	-10.2
TS24	8.2	-9.5	-0.267	-0.009	110.6	-5.9
TS26	2.8	-8.2	-0.277	-0.014	108.7	-3.0

The major change in properties for **TS6** suggest to us that the *ab initio* values for **TS6** might be qualitatively wrong, perhaps due to incorrect description of solvation. As already shown,²⁴ $\text{HCo}(\text{CO})_3$ can exist not only as an unsaturated free species under reaction conditions, but also as a complex with solvent if the latter is reasonably coordinating, as is the case for the toluene used in the experimental studies.²⁵ If this complex is indeed formed under reaction conditions, then the reaction leading from $\text{HCo}(\text{CO})_4$ **3** to $\text{HCo}(\text{CO})_3(\text{propene})$ **7** could proceed not dissociatively, but stepwise through concerted displacements (SN2-like) with intermediate formation of $\text{HCo}(\text{CO})_3(\text{toluene})$, where a CO ligand from $\text{HCo}(\text{CO})_4$ is first replaced by toluene to form $\text{HCo}(\text{CO})_3(\text{toluene})$ (**TS4'**), with a second step involving substitution of toluene by propene (**TS6'**) to form $\text{HCo}(\text{CO})_3(\text{propene})$ (Scheme 2).



Scheme 2. Proposed associative substitution mechanism for propene hydroformylation by $\text{Co}_2(\text{CO})_8$.

The complex and the two concerted associative TSs were then explored in new DFT calculations, including one explicit toluene solvent molecule (Table 2). The toluene complex **5'** is significantly lower in energy than $\text{HCo}(\text{CO})_3$ **5** + toluene by 65.5 kJ mol^{-1} , and importantly, the calculated Gibbs energy for **5'** is also lower than that of the fragments, by 9.0 kJ mol^{-1} at 383 K, supporting the idea that $\text{HCo}(\text{CO})_3(\text{toluene})$ **5'** is favored over **5** under reaction conditions. The calculated relative energies for **TS4'** and **TS6'** are also low, and similar to the experimental suggested activation energy of 77 kJ mol^{-1} ,²⁵ as would be expected if the latter is close to the difference in energy between reactants and the bottleneck to reaction. The new Gibbs energies for **TS4'** and **TS6'** are similar to the old ones. Note that canonical CCSD(T)-F12 values are not possible for these new species.

Table 2. Calculated relative energies (kJ mol^{-1}) and Gibbs energies (kJ mol^{-1} , $T = 383 \text{ K}$) for concerted associative mechanism.

Species	ΔE	ΔG
$\text{HCo}(\text{CO})_4$ 3 + toluene + propene	0.0	0.0
TS4' + propene	67.7	112.0
$\text{HCo}(\text{CO})_3(\text{toluene})$ 5' + CO + propene	60.8	60.2
TS6' + CO	57.6	101.9
7 + CO + toluene	30.1	29.1
$\text{HCo}(\text{CO})_3$ 5 + toluene + CO + propene	126.3	69.2

As before, a linear fit of the *ab initio* Gibbs energies at different temperatures for **TS4'**, **5'** and **TS6'** was carried out to obtain new *ab initio* enthalpies and entropies for these species, which can be compared to the initial *ab initio* enthalpies and entropies for **TS4**, **5** and **TS6** (Table 3). The new enthalpies and entropies are all significantly lower than the old ones, while the Gibbs energies change much more modestly. The ΔH and ΔS values for **TS6'** are also close to the corresponding

values in M4 (37.2 kJ mol⁻¹ and -0.144 kJ mol⁻¹ K⁻¹). These results suggest that the concerted associative mechanism is more favorable than the dissociative mechanism. Taking these ‘new’ *ab initio* enthalpies and entropies for **TS4'**, **5'** and **TS6'** together with the standard *ab initio* values for all other points, and modelling the kinetics, we get a ‘new’ *ab initio* model, which we refer to here as model MN, which has an RMS error on predicted rates of 84.0% and with $|\ln R_{\text{pred}}/R_{\text{exp}}|_{\text{max}}$ quite large, at 2.90. The dependence of the rate on temperature is still poor. However, the model captures the dependence of the rate on partial pressure of CO (Fig. S3).

Table 3. *Ab initio* enthalpies (kJ mol⁻¹), entropies (kJ mol⁻¹ K⁻¹) and Gibbs energies (kJ mol⁻¹, $T = 383$ K) for **TS4**, **5** and **TS6** for dissociative mechanism (X = nothing) and **TS4'**, **5'** and **TS6'** for associative substitution mechanism (X = toluene).

Species	$\Delta H/\Delta S/\Delta G$ (X = nothing)			$\Delta H/\Delta S/\Delta G$ (X = toluene)		
	ΔH	ΔS	ΔG	ΔH	ΔS	ΔG
TS: HCo(CO) ₄ → HCo(CO) ₃ [X]	150.6	0.097	113.5	76.8	-0.092	112.0
HCo(CO) ₃ [X]	144.7	0.156	84.9	68.6	0.022	60.2
TS: HCo(CO) ₃ [X] → HCo(CO) ₃ (propene)	154.0	0.134	102.5	71.5	-0.080	101.9

Again, we decided to carry out fitting to improve the kinetic model, allowing species for which $\partial\chi/\partial\Delta H$ exceeds 0.001 (and their *n/iso* counterparts, see Table S6 for a full list of $\partial\chi/\partial\Delta H$ and $\partial\chi/\partial T\Delta S$ for the ‘new’ *ab initio* model) i.e. species **1**, **TS4'**, **TS6'**, **TS12**, **13**, **TS14**, **15**, **21**, **23**, **TS24**, **TS26**, **TS31**, **TS32** to have modified enthalpy and entropy values. Fitting was performed using a Monte-Carlo approach with a maximum change of ΔH and ΔS values of 6 kJ mol⁻¹ and 0.02 kJ mol⁻¹ K⁻¹, except for **TS4'** and **TS6'**, where a larger maximum change of respectively 20 kJ mol⁻¹ and 0.06 kJ mol⁻¹ K⁻¹ was allowed as the *ab initio* values are obtained with DFT and have a higher uncertainty. This yields M5 (Figure 4 and Table S7) with an excellent RMS error of 11.7%, very good dependence of rate on CO partial pressure, and a small $|\ln R_{\text{pred}}/R_{\text{exp}}|_{\text{max}}$ of 0.31 (a maximum error by a factor of 1.4).

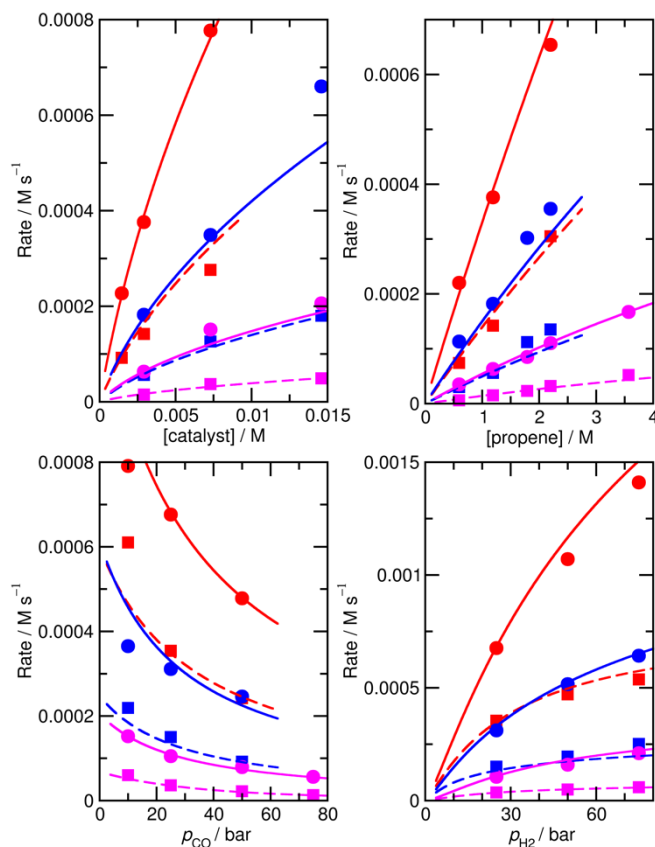


Figure 4. Predicted (lines) and experimental (points) rates for formation of *n*-butyraldehyde and *iso*-butyraldehyde under a range of different experimental conditions for M5. See Fig. 1 for full reaction conditions.

The largest remaining errors in this model are at the lowest CO partial pressure of 10 bar at the highest temperature, 423 K, where the predicted rate for formation of *n*-butyraldehyde is larger than the experimental one by $1.2 \times 10^{-4} \text{ M s}^{-1}$ and that for formation of *iso*-butyraldehyde is smaller than experiment by $1.4 \times 10^{-4} \text{ M s}^{-1}$. As these errors nearly cancel, the predicted overall turnover rate agrees well with experiment under all conditions (see Fig. S4). M5 therefore provides an accurate model of the experimental rates, and suggests that the reaction mechanism indeed involves formation of a toluene complex of $\text{HCo}(\text{CO})_3$.

Assuming that M5 is very close to the correct kinetic model, we can address the question of which step is rate-limiting. According to Table S6, **TS6'** has the largest absolute value of $\partial\chi/\partial\Delta H$, suggesting that the corresponding toluene-propene exchange step plays an important role as it impacts most significantly on the modelled rates. However, a more powerful way to analyze this

question is to use the degree of rate control (DRC) metric^{32,47} for the individual elementary steps, $\chi_{RC,i}$. This is defined as the derivative of the logarithm of the rate R with respect to the logarithm of the rate constant for a given step, with all equilibrium constants and rate constants for other steps and the reaction conditions (e.g. the concentrations C of the reactants and the temperature T) held constant, eq. (1). In case the step i is reversible, i.e. in case the inverse rate constant k_{-i} is non-zero, then the derivative is taken while holding the equilibrium constant for that step constant. In practice, to compute $\chi_{RC,i}$, the kinetic model is integrated to obtain a predicted turnover rate R , then a given rate constant is multiplied by a small factor, and the model recomputed, and the numerical derivative is evaluated. For reversible steps, both k_i and k_{-i} are scaled by the same factor. A value of $\chi_{RC,i} = 0$ for a given step indicates that this step is completely unimportant for determining the rate of turnover, while $\chi_{RC,i} = 1$ indicates that the given step is the only one that is turnover-limiting, with intermediate values indicating partial control (in that case, the sum of the $\chi_{RC,i}$ for all steps will equal 1).

$$\chi_{RC,i} = \left(\frac{\partial \ln R}{\partial \ln k_i} \right)_{k_j, K, C, T} = \frac{k_i}{R} \left(\frac{\partial R}{\partial k_i} \right)_{k_j, K, C, T} \quad (1)$$

We have computed $\chi_{RC,i}$ for each step in Scheme 1, and for each of the reaction conditions of Figures 1-4, for the reference rate constants of model M5. These results are shown in Table 4 and Figures 5 and S5-6. For the purpose of computing the degree of rate control, the ‘rate’ can be taken to be the overall rate of formation of butyraldehydes, or the rate of formation of the linear n -butyraldehyde isomer, or of the branched *iso*-butyraldehyde, and these are shown separately. Note that in the case of mechanisms with competing pathways, as here, $\chi_{RC,i}$ can be lower than zero, which occurs for steps which lead to decreased rate of turnover if their rate constant is increased. We find such negative degrees of rate control for reactions along the n - pathway when computing χ_{RC} in terms of the rate of production of *iso*-butyraldehyde, and vice versa.

Table 4. Calculated degree of rate control (DRC) values for formation of n -butyraldehyde, *iso*-butyraldehyde and overall butyraldehyde products for M5 (for $p_{CO}=p_{H_2}=50$ bar, [propene]=1.19 M, [catalyst]= 7.3×10^{-3} M, and $T=423$ K).

Reactions	DRC ^{total}	DRC ⁿ	DRC ^{iso}
-----------	----------------------	------------------	--------------------

Step 3	0.69	0.69	0.69
Step 6	0.06	0.15	-0.16
Step 7	0.05	-0.12	0.44
Step 12	0.16	0.37	-0.32
Step 13	0.04	-0.08	0.33
Step 17	0.00	-0.01	0.02

We find that under many conditions, more than one step exerts an influence on the rate, with the magnitude of $\chi_{RC,i}$ for different steps depending quite strongly on the reaction conditions. Under many conditions, the largest degree of rate control is associated with step 3 in Scheme 1, i.e. the addition of propene to $\text{HCo}(\text{CO})_3$, which in model M5 actually corresponds to substitution of toluene by propene in $\text{HCo}(\text{CO})_3(\text{toluene})$. Under the ‘most typical’ reaction conditions ($T = 423$ K, $p_{\text{CO}} = p_{\text{H}_2} = 50$ bar, $[\text{propene}] = 1.19$ M, and $[\text{catalyst}] = 7.3 \times 10^{-3}$ M), χ_{RC} for this step is 0.69 (whichever rate is used to compute χ_{RC} , i.e. the total rate of butyraldehyde formation, or those for *n*- or *iso*- formation, Table 4). While this large value indicates that propene addition has the dominant effect on turnover, the fact that it is significantly smaller than one indicates that other steps play a role also, in particular steps 6 and 7 (for addition of CO to $\text{RCo}(\text{CO})_3$, with R being *n*- or *iso*-propyl) and 12 and 13 (for H_2 -mediated cleavage of product from $\text{RCOCo}(\text{CO})_3$). Having multiple steps each partly determine turnover indicates a complex reaction mechanism, and carefully optimized reaction conditions, under which the optimal behavior of the individual steps is achieved.

Under different reaction conditions, the nature of the main turnover-limiting step can change. At low CO pressure, for example, step 12 (cleavage of the acyl-cobalt bond by hydrogen) becomes the dominant turnover-limiting step for formation of *n*-butyraldehyde (Figures 5 and S5). Changing the temperature also affects the contribution of the different steps to determining the rate of turnover. Under all conditions, though, multiple steps make non-negligible contributions. Overall, as already mentioned, the industrially most relevant experimental conditions with T near

400 K, and high pressures of CO and H₂, can be seen to emerge as conditions where the optimum turnover rate is controlled by several steps.

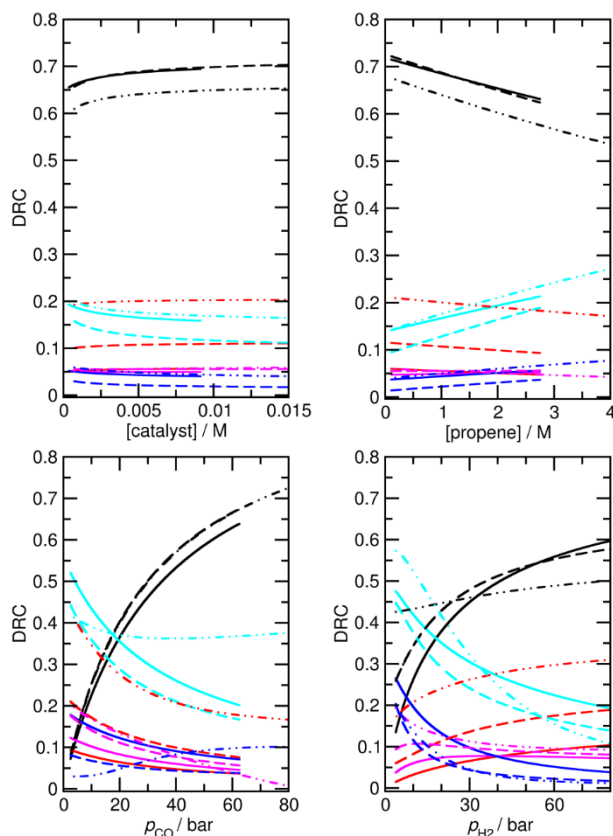


Figure 5. Calculated degree of rate control (DRC) values for formation of overall butyraldehyde products for M5 under a range of different experimental conditions. Experimental conditions: Top left: $p_{\text{CO}}=p_{\text{H}_2}=50$ bar, $[\text{propene}]=1.19$ M; Top right: $p_{\text{CO}}=p_{\text{H}_2}=50$ bar, $[\text{catalyst}]=0.00292$ M; Bottom left: $p_{\text{H}_2}=25$ bar, $[\text{catalyst}]=0.0073$ M, $[\text{propene}]=1.19$ M; Bottom right: $p_{\text{CO}}=25$ bar, $[\text{catalyst}]=0.0073$ M, $[\text{propene}]=1.19$ M. Black, step 3; Red, step 6; Magenta, step 7; Cyan, step 12; Blue, step 13; Solid lines, 423 K; Dashed lines, 403 K; Dash double-dotted lines, 383 K.

Another important mechanistic question can be examined based on our accurate kinetic model M5, and this relates to the relative contributions of the reactions of H₂ and HCo(CO)₄ **3** to the formation of butyraldehydes from the acyl-Co(CO)₃ species **17** and **19**, respectively reactions 12 and 13 (H₂) and 16 and 17 (HCo(CO)₄). At low temperature, under stoichiometric conditions, **3** is known to be able to effect the cleavage of acyl-Co(CO)₃, but the contribution under practical catalytic turnover conditions is less well known. Here we have computed the proportion of the rate

of aldehyde formation corresponding to the bimetallic route compared to the total rate of formation for the different experimental conditions (Figure S7). As expected, this proportion increases upon increasing the total cobalt concentration, and decreases upon increasing the partial pressure of H₂. It also varies slightly with temperature, with p_{CO} and with the concentration of propene. The proportion of *iso*-butyraldehyde formed through the alternative mechanism is also typically higher than for *n*-butyraldehyde. However, in all cases, the proportion of the bimetallic mechanism remains quite small, under 12%. This suggests that the alternative mechanism does not play an essential role.

This is confirmed by examining an alternative model, M6, which is constructed in the same way as M5, except that the bimetallic steps are removed. Starting from the ‘new’ *ab initio* model MN, reactions 16 and 17 were removed, and a new fit to experiment was performed. The enthalpies and entropies of species **1**, **TS4'**, **TS6'**, **TS12**, **13**, **TS14**, **15**, **21**, **23**, **TS24**, **TS26** were allowed to undergo changes, and fitting was performed using a Monte-Carlo approach with a maximum change of ΔH and ΔS values of 6 kJ mol⁻¹ and 0.02 kJ mol⁻¹ K⁻¹, except for **TS4'** and **TS6'**, where a larger maximum change of respectively 20 kJ mol⁻¹ and 0.06 kJ mol⁻¹ K⁻¹ was allowed. Model M6 (Figure 6 and Table S8) has an excellent RMS error of 11.7%, very good dependence of rate on CO partial pressure, and $|\ln R_{\text{pred}}/R_{\text{exp}}|_{\text{max}}$ of 0.42 (a maximum error by a factor of 1.5). This model M6 is thereby in terms of accuracy profile to M5 where the alternative bimetallic mechanism is included, further suggesting that the alternative bimetallic mechanism does not play an important role under industrial turnover conditions.

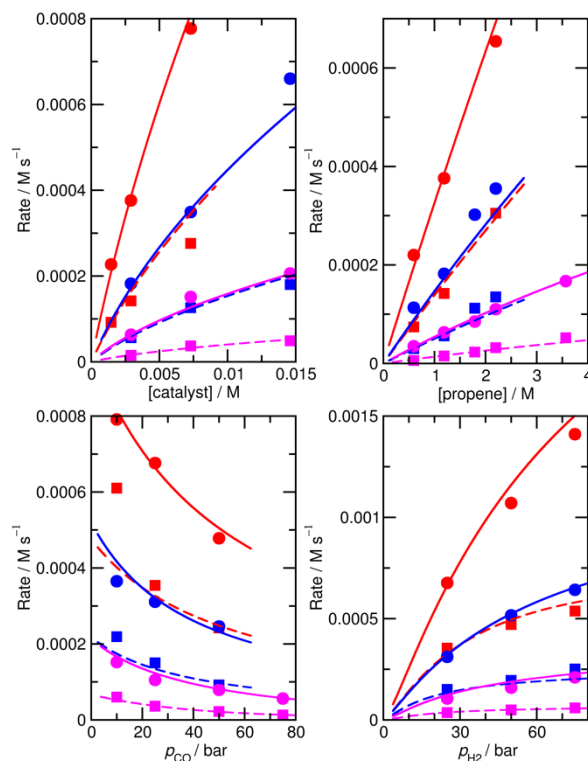


Figure 6. Predicted (lines) and experimental (points) rates for formation of *n*-butyraldehyde and *iso*-butyraldehyde under a range of different experimental conditions for M6. See Fig. 1 for full reaction conditions.

Computational Details

Quantum Chemical Calculations. All structures were optimized using the B3LYP⁴⁸ density functional as implemented in Gaussian 16 rev. A03,⁴⁹ using the Grimme dispersion correction with Becke-Johnson damping⁵⁰ and the 6-311G(d) basis set⁵¹ on all atoms. Vibrational frequencies were computed at the same level of theory. Standard DFT integration grids were used throughout. For the Gibbs energy correction (computed at 383, 403 and 423 K), the rotational constants from the Gaussian 16 optimized structure were used together with the rigid rotor approximation, while the vibrational contribution was computed using the quasi-harmonic approximation,⁵² whereby vibrational frequencies with a magnitude smaller than a cut-off value of 50 cm⁻¹ were replaced by frequencies of 50 cm⁻¹ prior to computation of the harmonic oscillator thermal and entropic

contributions. A standard state concentration of 1 M was used for all species, except for CO (an ideal gas standard state of 1 bar), for computing the translational component. Note that for toluene, the standard state concentration at 25 °C is 9.4 M but we have not included the corresponding quite small contribution to Gibbs energies (roughly 5.6 kJ mol⁻¹) since the uncertainty on Gibbs energy for these species is anyway quite high and kinetic fitting including changes in Gibbs energy by more than this term is performed.

Kinetic Modeling and Fitting. Two different approaches have been applied to minimize the RMS error between predicted and experimental rates with an in-house code, by carrying out modifications of the *ab initio* enthalpies and entropies of the different species and transition states. One is a constrained Monte-Carlo method, where random changes are made to the *ab initio* enthalpies and entropies but with maximum allowed changes for each species. Then Gibbs energies for each species were recalculated and used together with the Eyring equation to calculate forward and reverse rate constants, followed by integrating the kinetic equation to predict the rates for formation of products. If these modified enthalpies and entropies lead to a reduction in the RMS error, the update is accepted and the process iterates until a lowest RMS is found.

Another method is gradient-based minimization by implementing the Broyden–Fletcher–Goldfarb–Shanno (BFGS) algorithm to minimize the RMS error. The derivative of the RMS error with respect to ΔH and ΔS for each species, $\partial\chi/\partial\Delta H$ and $\partial\chi/\partial\Delta S$, are calculated numerically by re-propagating the kinetics with slightly modified ΔH and ΔS values. For this, we use a central difference approximation with step widths of 0.0001 kJ mol⁻¹ for ΔH and 0.0001 J mol⁻¹ K⁻¹ for ΔS . The BFGS algorithm was then applied to seek a minimum of the RMS error with respect to ΔH and ΔS .

Conclusions

In summary, we explore the mechanism of propene hydroformylation by Co₂(CO)₈, using a combination of quantum-chemistry, kinetic modelling, and reference to experimental kinetics. We explore the origin of the remaining discrepancies between predicted and observed rates by carrying out systematic numerical fitting of the ‘raw’ *ab initio* kinetic model to the experiment, and propose this as a protocol for refined mechanism development in homogeneous catalysis. Initial attempts to obtain a high quality fit of the ‘raw’ *ab initio* model to the experimental kinetics while making

only modest adjustments to the *ab initio* enthalpies and entropies of the key species were unsuccessful, but much improved agreement with experiment was obtained upon allowing some key species to undergo much larger adjustments of the *ab initio* enthalpy and entropy. This occurs in particular for the key transition state **TS6** for addition of propene to $\text{HCo}(\text{CO})_3$, and has led us to suggest that the molecular representation of this TS in our previous models is qualitatively incorrect. If we assume that free $\text{HCo}(\text{CO})_3$ is not formed, being replaced in the mechanism by a solvated species $\text{HCo}(\text{CO})_3(\text{toluene})$, then **TS6** is re-interpreted as a TS for exchange of toluene and propene.

Based on this suggestion emerging from the kinetic fitting process, we re-examined the corresponding steps using quantum chemical methods, and we indeed could locate the $\text{HCo}(\text{CO})_3(\text{toluene})$ and its TSs for exchange of toluene by CO or propene. The raw *ab initio* free energy for these species confirm that they could in principle compete with the coordinatively unsaturated $\text{HCo}(\text{CO})_3$ species. Kinetic modelling using the *ab initio* enthalpies and entropies computed for this new microscopic model led to acceptable agreement with experiment, but crucially, tightly constrained fitting using these new *ab initio* values as starting points led to a highly accurate model which surpasses previous models in terms of ability to reproduce experimental rate data and yields new microscopic insight into the mechanism.

Where enough high-quality experimental kinetics data is available, we suggest that this type of combined experimental, quantum-chemical and microkinetics modelling approach can yield the highest level of insight available into microscopic reaction mechanisms in catalysis or elsewhere. Experiments are of course essential as purely computational techniques are not routinely able to provide quantitative results. Quantum chemistry is essential in order to provide detailed microscopic models. Kinetic simulations provide a bridge between the two approaches, and the synergy between all three techniques can lead to refinement of the models put forward based on only some of the approaches.

Catalysis of hydroformylation by cobalt carbonyl complexes is shown to follow a complex mechanism, with the coordination of propene to the cobalt center shown to be the main turnover-limiting step, but several other steps are also partly turnover-limiting, with the role of each step in determining catalytic rate depending in part on the reaction conditions.

REFERENCES

- (1) Harvey, J. N.; Himo, F.; Maseras, F.; Perrin, L. Scope and Challenge of Computational Methods for Studying Mechanism and Reactivity in Homogeneous Catalysis. *ACS Catal.* **2019**, *9*, 6803–6813.
- (2) Tsang, A. S. K.; Sanhueza, I. A.; Schoenebeck, F. Combining Experimental and Computational Studies to Understand and Predict Reactivities of Relevance to Homogeneous Catalysis. *Chem. Eur. J.* **2014**, *20*, 16432–16441.
- (3) Santoro, S.; Kalek, M.; Huang, G.; Himo, F. Elucidation of Mechanisms and Selectivities of Metal-Catalyzed Reactions using Quantum Chemical Methodology. *Acc. Chem. Res.* **2016**, *49*, 1006–1018.
- (4) Davies, D. L.; Macgregor, S. A.; McMullin, C. L. Computational Studies of Carboxylate-Assisted C–H Activation and Functionalization at Group 8–10 Transition Metal Centers. *Chem. Rev.* **2017**, *117*, 8649–8709.
- (5) Ahn, S.; Hong, M.; Sundararajan, M.; Ess, D. H.; Baik, M. H. Design and Optimization of Catalysts Based on Mechanistic Insights Derived from Quantum Chemical Reaction Modeling. *Chem. Rev.*, **2019**, *119*, 6509–6560.
- (6) Durand, D. J.; Fey, N. Building a Toolbox for the Analysis and Prediction of Ligand and Catalyst Effects in Organometallic Catalysis. *Acc. Chem. Res.* **2021**, *54*, 837–848.
- (7) Vogiatzis, K. D.; Polynski, M. V.; Kirkland, J. K.; Townsend, J.; Hashemi, A.; Liu, C.; Pidko, E. A. Computational Approach to Molecular Catalysis by 3d Transition Metals: Challenges and Opportunities. *Chem. Rev.* **2019**, *119*, 2453–2523.
- (8) Sperger, T.; Sanhueza, I. A.; Kalvet, I.; Schoenebeck, F. Computational Studies of Synthetically Relevant Homogeneous Organometallic Catalysis Involving Ni, Pd, Ir, and Rh: An Overview of Commonly Employed DFT Methods and Mechanistic Insights. *Chem. Rev.* **2015**, *115*, 9532–9586.

- (9) Sameera, W. M. C.; Maseras, F. Transition metal catalysis by density functional theory and density functional theory/molecular mechanics. *WIREs Comput. Mol. Sci.* **2012**, *2*, 375–385.
- (10) Li, B.; Xu, H.; Dang, Y.; Houk, K. N. Dispersion and Steric Effects on Enantio-/Diastereoselectivities in Synergistic Dual Transition-Metal Catalysis. *J. Am. Chem. Soc.* **2022**, *144*, 1971–1985.
- (11) Wititsuwannakul, T.; Hall, M. B.; Gladysz, J. A. Mechanism of Coupling of Methylidene to Ethylene Ligands in Dimetallic Assemblies; Computational Investigation of a Model for a Key Step in Catalytic C₁ Chemistry. *J. Am. Chem. Soc.* **2022**, *144*, 18672–18687.
- (12) Thiel, W. Computational Catalysis—Past, Present, and Future. *Angew. Chem. Int. Ed.* **2014**, *53*, 8605–8613.
- (13) Bligaard, T.; Nørskov, J. K.; Dahl, S.; Matthiesen, J.; Christensen, C. H.; Sehested, J. The Brønsted–Evans–Polanyi relation and the volcano curve in heterogeneous catalysis. *J. Catal.* **2004**, *224*, 206–217.
- (14) Chen, B. W.; Xu, L.; Mavrikakis, M. Computational Methods in Heterogeneous Catalysis. *Chem. Rev.* **2021**, *121*, 1007–1048.
- (15) Bruix, A.; Margraf, J. T.; Andersen, M.; Reuter, K. First-principles-based multiscale modelling of heterogeneous catalysis. *Nat. Catal.* **2019**, *2*, 659–670.
- (16) Besora, M.; Maseras, F. Microkinetic modeling in homogeneous catalysis. *WIREs Comput. Mol. Sci.* **2018**, *8*, e1372.
- (17) Jaraiz, M.; Rubio, J. E.; Enriquez, L.; Pinacho, R.; Lopez-Perez, J. L.; Lesarri, A. An Efficient Microkinetic Modeling Protocol: Start with Only the Dominant Mechanisms, Adjust All Parameters, and Build the Complete Model Incrementally. *ACS Catal.* **2019**, *9*, 4804–4809.

- (18) Brezny, A. C.; Landis, C. R. Development of a Comprehensive Microkinetic Model for Rh(bis(diazaphospholane))-Catalyzed Hydroformylation. *ACS Catal.* **2019**, *9*, 2501–2513.
- (19) Kefalidis, C. E.; Davi, M.; Holstein, P. M.; Clot, E.; Baudoin, O. Mechanistic Study of the Selectivity of Olefin versus Cyclobutene Formation by Palladium(0)-Catalyzed Intramolecular C(sp³)-H Activation. *J. Org. Chem.* **2014**, *79*, 11903–11910.
- (20) Motagamwala, A. H.; Dumesic, J. A. Microkinetic Modeling: A Tool for Rational Catalyst Design. *Chem. Rev.* **2021**, *121*, 1049–1076.
- (21) Mao, Y.; Wang, H. F.; Hu, P. Theory and applications of surface micro-kinetics in the rational design of catalysts using density functional theory calculations. *WIREs Comput. Mol. Sci.* **2017**, *7*, e1321.
- (22) Kozuch, S.; Shaik, S. How to Conceptualize Catalytic Cycles? The Energetic Span Model. *Acc. Chem. Res.* **2011**, *44*, 101–110.
- (23) Rush, L. E.; Pringle, P. G.; Harvey, J. N. Computational Kinetics of Cobalt-Catalyzed Alkene Hydroformylation. *Angew. Chem. Int. Ed.* **2014**, *53*, 8672–8676; *Angew. Chem.* **2014**, *126*, 8816–8820.
- (24) Szlapa, E. N.; Harvey, J. N. Computational Modelling of Selectivity in Cobalt-Catalyzed Propene Hydroformylation. *Chem. Eur. J.* **2018**, *24*, 17096–17104.
- (25) a) Gholap, R. V.; Kut, O. M.; Bourne, J. R. Hydroformylation of propylene using an unmodified cobalt carbonyl catalyst: a kinetic study. *Ind. Eng. Chem. Res.* **1992**, *31*, 1597–1601; b) Gholap, R. V.; Kut, O. M.; Bourne, J. R. Hydroformylation of propylene using unmodified cobalt carbonyl catalyst: selectivity studies. *Ind. Eng. Chem. Res.* **1992**, *31*, 2446–2450.
- (26) Kalek, M.; Himo, F. Mechanism and Selectivity of Cooperatively Catalyzed Meyer–Schuster Rearrangement/Tsuji–Trost Allylic Substitution. Evaluation of Synergistic Catalysis by Means of Combined DFT and Kinetics Simulations. *J. Am. Chem. Soc.* **2017**, *139*, 10250–10266.

- (27) Jaraiz, M.; Enriquez, L.; Pinacho, R.; Rubio, J. E.; Lesarri, A.; Lopez-Perez, J. L. A DFT-Based Computational-Experimental Methodology for Synthetic Chemistry: Example of Application to the Catalytic Opening of Epoxides by Titanocene. *J. Org. Chem.* **2017**, *82*, 3760–3766.
- (28) Benedek, Z.; Papp, M.; Olah, J.; Szilvasi, T. Demonstrating the Direct Relationship between Hydrogen Evolution Reaction and Catalyst Deactivation in Synthetic Fe Nitrogenases. *ACS Catal.* **2020**, *10*, 12555–12568.
- (29) Yu, Y.; Zhu, Y.; Bhagat, M. N.; Raghuraman, A.; Hirsekorn, K. F.; Notestein, J. M.; Nguyen, S. T.; Broadbelt, L. J. Mechanism of Regioselective Ring-Opening Reactions of 1,2-Epoxyoctane Catalyzed by Tris(pentafluorophenyl)borane: A Combined Experimental, Density Functional Theory, and Microkinetic Study. *ACS Catal.* **2018**, *8*, 11119–11133.
- (30) Artús Suárez, L.; Culakova, Z.; Balcells, D.; Bernskoetter, W. H.; Eisenstein, O.; Goldberg, K. I.; Hazari, N.; Tilset, M.; Nova, A. The Key Role of the Hemiaminal Intermediate in the Iron-Catalyzed Deaminative Hydrogenation of Amides. *ACS Catal.* **2018**, *8*, 8751–8762.
- (31) Rama, R. J.; Maya, C.; Molina, F.; Nova, A.; Nicasio, M. C. Important Role of NH-Carbazole in Aryl Amination Reactions Catalyzed by 2-Aminobiphenyl Palladacycles. *ACS Catal.* **2023**, *13*, 3934–3948.
- (32) Heitkämper, J.; Herrmann, J.; Titze, M.; Bauch, S. M.; Peters, R.; Kästner, J. Asymmetric Hydroboration of Ketones by Cooperative Lewis Acid–Onium Salt Catalysis: A Quantum Chemical and Microkinetic Study to Combine Theory and Experiment. *ACS Catal.* **2022**, *12*, 1497–1507.
- (33) Legnani, L.; Daru, A.; Jones, A. X.; Blackmond, D. G. Mechanistic Insight into the Origin of Stereoselectivity in the Ribose-Mediated Strecker Synthesis of Alanine. *J. Am. Chem. Soc.* **2021**, *143*, 7852–7858.

- (34) Pham, J.; Jarczyk, C. E.; Reynolds, E. F.; Kelly, S. E.; Kim, T.; He, T.; Keith, J. M.; Chianese, A. R. The key role of the latent N–H group in Milstein's catalyst for ester hydrogenation. *Chem. Sci.* **2021**, *12*, 8477–8492.
- (35) Goehry, C.; Besora, M.; Maseras, F. Computational Study on the Mechanism of the Acceleration of 1,3-Dipolar Cycloaddition inside Cucurbit[6]uril. *ACS Catal.* **2015**, *5*, 2445–2451.
- (36) Young, T. A.; Silcock, J. J.; Sterling, A. J.; Duarte, F. autodE: Automated Calculation of Reaction Energy Profiles—Application to Organic and Organometallic Reactions. *Angew. Chem. Int. Ed.* **2021**, *60*, 4266–4274.
- (37) Ramos-Sánchez, P.; Harvey, J. N.; Gámez, J. A. An automated method for graph-based chemical space exploration and transition state finding. *J. Comput. Chem.* **2023**, *44*, 27–42.
- (38) Maeda, S.; Ohno, K.; Morokuma, K. Systematic exploration of the mechanism of chemical reactions: the global reaction route mapping (GRRM) strategy using the ADDF and AFIR methods. *Phys. Chem. Chem. Phys.* **2013**, *15*, 3683–3701.
- (39) Habershon, S. Automated Prediction of Catalytic Mechanism and Rate Law Using Graph-Based Reaction Path Sampling. *J. Chem. Theory Comput.* **2016**, *12*, 1786–1798.
- (40) Proppe, J.; Reiher, M. Mechanism Deduction from Noisy Chemical Reaction Networks. *J. Chem. Theory Comput.* **2019**, *15*, 357–370.
- (41) Proppe, J.; Husch, T.; Simm, G. N.; Reiher, M. Uncertainty quantification for quantum chemical models of complex reaction networks. *Faraday Discuss.* **2016**, *195*, 497–520.
- (42) Tan, E. H.; Lloyd-Jones, G. C.; Harvey, J. N.; Lennox, A. J.; Mills, B. M. [(RCN)₂PdCl₂]-Catalyzed E/Z Isomerization of Alkenes: A Non-Hydride Binuclear Addition–Elimination Pathway. *Angew. Chem. Int. Ed.* **2011**, *50*, 9602–9606.

- (43) Sutton, J. E.; Guo, W.; Katsoulakis, M. A.; Vlachos, D. G. Effects of correlated parameters and uncertainty in electronic-structure-based chemical kinetic modelling. *Nat. Chem.* **2016**, *8*, 331–337.
- (44) Gao, C. W.; Liu, M.; Green, W. H. Uncertainty analysis of correlated parameters in automated reaction mechanism generation. *Int. J. Chem. Kinet.* **2020**, *52*, 266–282.
- (45) Bhawal, B. N.; Morandi, B. Shuttle Catalysis—New Strategies in Organic Synthesis. *Chem. Eur. J.* **2017**, *23*, 12004–12013.
- (46) Murphy, S. K.; Park, J.-W.; Cruz, F. A.; Dong, V. M. Rh-catalyzed C–C bond cleavage by transfer hydroformylation. *Science.* **2015**, *347*, 56–60.
- (47) Campbell, C. T. The Degree of Rate Control: A Powerful Tool for Catalysis Research. *ACS Catal.* **2017**, *7*, 2770–2779.
- (48) Becke, A. D. Density-functional thermochemistry. III. The role of exact exchange. *J. Chem. Phys.* **1993**, *98*, 5648–5652.
- (49) Gaussian 16, Revision A.03, M. J. Frisch, G. W. Trucks, H. B. Schlegel, G. E. Scuseria, M. A. Robb, J. R. Cheeseman, G. Scalmani, V. Barone, G. A. Petersson, H. Nakatsuji, X. Li, M. Caricato, A. V. Marenich, J. Bloino, B. G. Janesko, R. Gomperts, B. Mennucci, H. P. Hratchian, J. V. Ortiz, A. F. Izmaylov, J. L. Sonnenberg, D. Williams-Young, F. Ding, F. Lipparini, F. Egidi, J. Goings, B. Peng, A. Petrone, T. Henderson, D. Ranasinghe, V. G. Zakrzewski, J. Gao, N. Rega, G. Zheng, W. Liang, M. Hada, M. Ehara, K. Toyota, R. Fukuda, J. Hasegawa, M. Ishida, T. Nakajima, Y. Honda, O. Kitao, H. Nakai, T. Vreven, K. Throssell, J. A. Montgomery Jr., J. E. Peralta, F. Ogliaro, M. J. Bearpark, J. J. Heyd, E. N. Brothers, K. N. Kudin, V. N. Staroverov, T. A. Keith, R. Kobayashi, J. Normand, K. Raghavachari, A. P. Rendell, J. C. Burant, S. S. Iyengar, J. Tomasi, M. Cossi, J. M. Millam, M. Klene, C. Adamo, R. Cammi, J. W. Ochterski, R. L. Martin, K. Morokuma, O. Farkas, J. B. Foresman, D. J. Fox, Gaussian, Inc., Wallingford CT, **2016**.

- (50) Grimme, S.; Ehrlich, S.; Goerigk, L. Effect of the damping function in dispersion corrected density functional theory. *J. Comput. Chem.* **2011**, *32*, 1456–1465.
- (51) a) Krishnan, R. B. J. S.; Binkley, J. S.; Seeger, R.; Pople, J. A. Self-consistent molecular orbital methods. XX. A basis set for correlated wave functions. *J. Chem. Phys.* **1980**, *72*, 650–654; b) McLean, A. D.; Chandler, G. S. Contracted Gaussian basis sets for molecular calculations. I. Second row atoms, $Z=11-18$. *J. Chem. Phys.* **1980**, *72*, 5639–5648.
- (52) Ribeiro, R. F.; Marenich, A. V.; Cramer, C. J.; Truhlar, D. G. Use of Solution-Phase Vibrational Frequencies in Continuum Models for the Free Energy of Solvation. *J. Phys. Chem. B* **2011**, *115*, 14556–14562.