

Coupling droplet microfluidics with mass spectrometry for ultra-high-throughput analysis up to and above 30Hz.

Emily E. Kempa,[†] Clive A. Smith,[‡] Xin Li,[‡] Bruno Bellina,[†] Keith Richardson,[¶] Steven Pringle[¶] and Perdita E. Barran.^{†,*}

[†] Michael Barber Centre for Collaborative Mass Spectrometry, Manchester Institute of Biotechnology, Manchester, M1 7DN, UK

[‡] Sphere Fluidics Limited, McClintock Building, Suite 7, Granta Park, Great Abington, Cambridge CB21 6GP, UK

[¶] Waters Corporation, Stamford Avenue, Altrincham Road, Wilmslow, SK9 4AX, UK

ABSTRACT: High and ultra-high-throughput label-free sample analysis is required by many applications, extending from environmental monitoring to drug discovery and industrial biotechnology. Here we use microdroplet generation microfluidics to supply picolitre aliquots of analyte for mass spectrometry analysis at rates up to and including 33 Hz. This is demonstrated for peptides and proteins on three commercially available mass spectrometers from salty solutions. Designs for chip-based interfaces that permit this coupling are presented and the merits and challenges of these interfaces are discussed. On an Orbitrap platform droplet infusion rates of 6 Hz are used for the analysis of cytochrome c, on a DTIMS Q-TOF similar rates were obtained and on a TWIMS Q-TOF utilizing IM-MS software rates up to 33 Hz are demonstrated for both peptides and proteins at concentrations down to 400 pg per aliquot.

High-throughput screening (HTS) and ultra-high-throughput screening (uHTS) methodologies aim to analyse tens to hundreds of thousands of samples per day.¹⁻⁵ In both industry and academia, the use of microtiter plate formats has become ubiquitous for sample handling and HTS. This format is used across many different analytical platforms such as fluorescent readers⁶ and liquid chromatography injection systems.^{7,8} There are drawbacks to the microtiter plate methods which include restriction of sample volumes to micro-litre ranges, and the substantial footprints and maintenance costs of the storage systems and transfer robotics utilised. Efforts to reduce costs have included increasing the number of wells per plate and the implementation of pipette-free sample transfer.

Label-free detection strategies measure physical properties of the sample and do not rely upon the determination of indirect measurements such as those based upon ligated chromophores (fluorescent or colour metric) or radioisotopes.^{9,10} Examples of 'label-free' analytical instrumentation includes data-rich spectroscopic approaches such as nuclear magnetic resonance (NMR), Fourier Transform infra-red (FTIR) and Raman spectroscopy and mass spectrometry. Label-free methodologies can have lower cost outlays, as the purchase and inclusion of fluorophores, chromophores, affinity tags or equivalent molecular tags are not required, and are less susceptible to false positives. In addition, these targeted analyses frequently only allow for binary 'yes/no' answers with no granularity to the information provided. Workflows which fulfil both 'label-free' and high-throughput prerequisites are highly sought after by coupling the highest throughput analytical instrumentation currently available with robotics. Rapid sample delivery methodologies which overcome the constraints of robotic systems would favour label-free ultra-high-throughput screening.

In recent years developments in microfluidics have shown it that is possible to reproducibly manipulate volumes of liquids within channels measuring less than 1mm in diameter.¹¹⁻¹³ Droplet microfluidics, in particular, involves the transport and study of compartmentalised 'bursts' of analyte formed by the transport of two immiscible phases, with droplet generation often occurring 'on-chip'.¹⁴⁻¹⁸ Microfluidic devices, or chips, are often fabricated from glass, polymers or silicon,^{15,19} with in-built channels that facilitate the movement of droplets through the device towards the analytical technique in operation. Previously, droplet microfluidic chips have been successfully coupled to a wide range of analytical instrumentation, including fluorescence²⁰ and optical detection,²¹ mass spectrometry,^{22,23} Raman spectroscopy²⁴ and NMR,²⁵ with each droplet considered as an individual sample or reaction vessel. Combining these techniques with microfluidic supplied analyte at speeds up to 10,000 droplets per second²⁶ would facilitate high-throughput screening in an alternative arrangement to microtiter plate formats.

Mass spectrometry (MS) is a highly sensitive, 'label-free' analytical technique widely employed to qualitatively and quantitatively probe the composition of a sample. Briefly, the promotion into, and subsequent separation of analyte ions within the gaseous phase allows the molecular weight of species present within the sample to be determined. There are many different mass analysers, which disperse ions in time or in space. Acquisition speed is analyser dependent and this is determined by physics, electronics, software and manufacturer, to some extent by the operator, the mass and charge upon ions in question, and the mass resolution required. The coupling of automated sample introduction with mass spectrometry is not new,^{27,28} although

as higher throughput analysis is required analysers and acquisition modes have become faster and faster. Of all the common analysers, time of flight (TOF) mass spectrometers inherently have the highest acquisition speeds, without compromising resolution²⁹ and are most obviously suited to HTS applications.

Coupling of HTS microfluidics to mass spectrometers is most commonly achieved through the incorporation of a liquid outlet similar to that of an electrospray (ESI) or nano-electrospray (nESI) emitter into a chip, allowing for a direct infusion of the analytes to the ion source.^{30–32} Droplet microfluidics directly coupled with MS has been hindered by the need to extract or divert the analyte-containing phase (commonly aqueous) from the separative phase (commonly hydrophobic) prior to MS infusion.^{33–35} Separative phases can contaminate MS instrumentation, and dual-phase fluidics can lead to Taylor cone instability and inadequate electrospray ionisation. A number of reports in which a dual-phase system has exploited the alternating aqueous and oil phases exiting the microfluidic device for droplet detection have been highlighted. Smith *et al.*,²³ Wink *et al.*²² and Steyer *et al.*³⁶ all directly infuse both oil and aqueous streams directly into MS instrumentation through varying different emitter types and display MS detection of individual droplets. Recently high-throughput microdroplet infusion with MS detection, for HTS, with a throughput of up to 10 Hz has been reported by Steyer *et al.* in 2019.³⁶

Often, literature entries only report the adaption of microdroplet microfluidics with one ESI MS platform; however, here we illustrate flexibility through chip-MS coupling to instruments from three different vendors, to assess the optimal commercial instrumentation platform for laboratories to perform HTS and uHTS. The ease of chip integration with the current instrumentation and a comparison of instrument acquisition speed will be taken into consideration when specifying the instrumental requirements for such a platform. We demonstrate how MS droplet screening can be extended to rates over 30 microdroplets per second using fast scanning acquisition IM-Q-TOF instrumentation.

Methods and Materials All protein and peptide standards (leucine enkephalin, bovine ubiquitin and equine cytochrome C) were purchased along with ammonium acetate from Sigma Aldrich (Dorset, UK). Leucine enkephalin was dissolved in deionised water (obtained from a Milli-Q Advantage ultrapure water filtration system, Merck Millipore, Darmstadt, Germany) containing 0.1% Formic acid (Fisher Scientific, Loughborough, UK) to produce a ~1.3 mM solution of the peptide. Ubiquitin and cytochrome C were dissolved in a solution of 100 mM ammonium acetate in deionised water to produce ~100 μM solutions of each protein respectively (unless stated otherwise). In every case, the separative oil phase consisted of Pico-Surf™ 1 (Sphere Fluidics Ltd., Cambridge, UK) diluted to 1% in Novec™ 7500 Engineered Fluid (3M, Maplewood, MN, USA).

Chip design and fabrication All microfluidic chips used in this work were fabricated from polydimethylsiloxane (PDMS, Dow Chemical Company, MI, USA) using established photolithography and soft lithography techniques as described in the literature.^{13,37} A detailed procedure can be found in the supporting information to this paper. Stainless steel capillaries (Vita Needle Company, Needham, MA, US) of varying lengths with an internal diameter of 76 μm were incorporated into the fluidic outlet channel of the final PDMS devices and secured using Elastosil E43 silicon sealant (Wacker Chemie AG, München, Germany) as described by Wink *et al.*²²

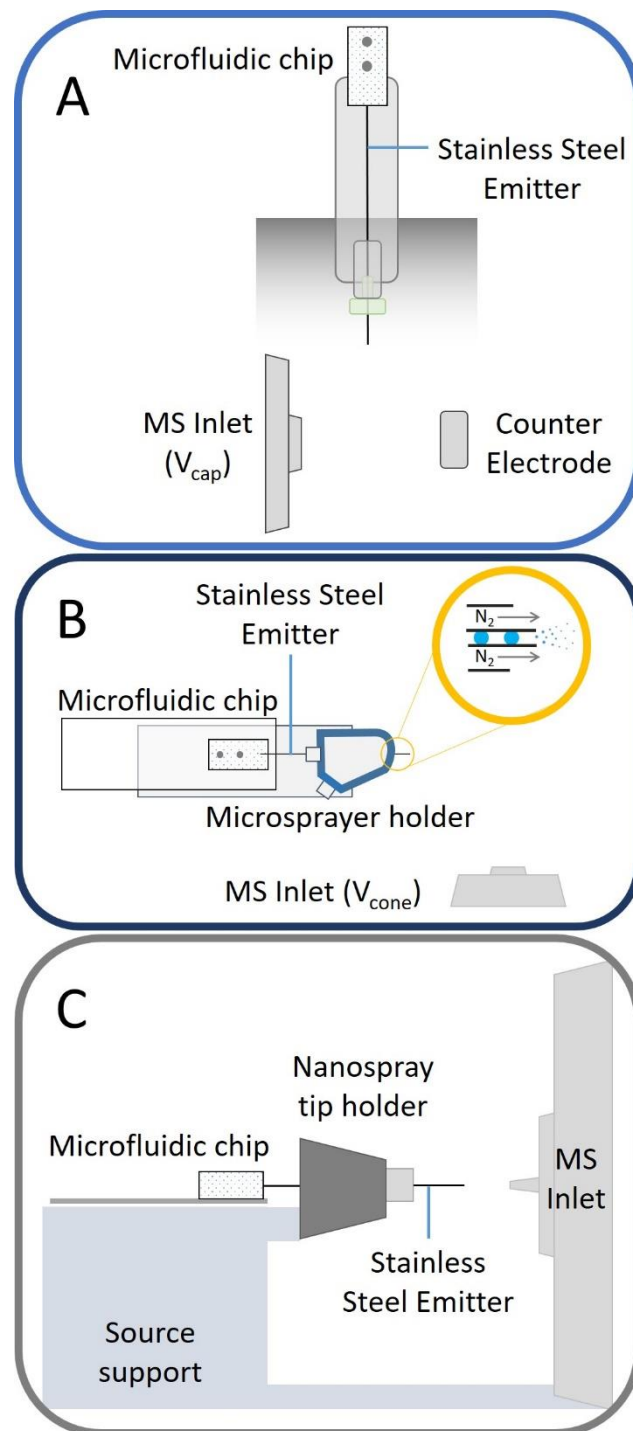


Figure 1. A) Schematic (side view) of the adaptation of a vertically mounted Agilent Nanospray ESI source to incorporate a microfluidic chip. The emitter is grounded and held ~0.3 cm from a counter electrode held at ~1.75 kV. The entire assembly is enclosed from the lab. B) Schematic representation (top view) of the microfluidic chip interfaced to a Waters z-spray source by adapting a micro-spray assembly (source support not shown). A close up (yellow ringed inset) indicates coaxial gas flow around the stainless-steel emitter. The emitter is held at ~2.8 kV and positioned 0.5 cm from the conical counter electrode which is the entrance to the mass spectrometer held at V_{cone} (~54 V). C) Schematic (side view) of the droplet microfluidic chip interfaced with the Thermo Fisher Q Exactive nESI

source, in which the stainless-steel emitter is inserted in the place of the nanospray tip and held in place with a conductive screw. The distance between the emitter and the entrance to the MS is 0.5 cm. These schematics are not to scale. Photographic representations indicating scale and dimensions of the microfluidic chip within all 3 instrumental configurations can be found in the supporting information SI figures S3-S5.

Coupling to ESI sources and establishing droplet flow Infusion to each mass spectrometer was achieved through the coupling of a designed chip to the respective vendor's nESI source (Figure 1). Exact coupling methods differ as described. The oil and aqueous connections required to generate droplets with the microfluidic chip consisted of 1.09mm outer diameter tubing (0.38 mm ID, Smiths Medical Inc., Minneapolis, MI, USA) between the punched chip inlets and the syringe pump (neMESYS low-pressure syringe pump, CETONI GmbH, Korbußen, Germany) in each case. As droplets are generated with a diameter larger than that of the internal diameter of the stainless steel emitter, droplets and the segmented oil phase reach the outlet of the emitter as 'plugs' of that phase, and as such do not lose their inter-droplet spacing as they enter the mass spectrometer. Prior to infusion into the mass spectrometer, the frequency of the generated droplets and their diameter were determined *via* optical analysis. This was achieved through the use of the Picodroplet Single Cell Encapsulation System instrumentation (Sphere Fluidics Ltd., Cambridge, UK). Observed frequencies are dependent on the device dimensions and the flow rates utilised during infusion, and consistency of droplet frequency for a given flow rate can be used to validate the manufacturing process. Chip designs of varying channel dimensions were used in this study to generate droplets at differing frequencies and dimensions. Note that the chips used are interchangeable between instruments with the design chosen in each case due to device availability only.

Infusion of the oil and aqueous phases allowed droplet generation with the droplet emulsion exiting the outlet of the stainless-steel emitter able to be observed by eye. Upon application of the electrospray voltage fluid reaching the outlet of the emitter can be seen to enter the MS inlet in the form of an electrospray plume (see Figure S3F for an example of this). As microdroplets enter the mass spectrometer individually, increases in the mass spectrometry signal are observed in the total ion and extracted ion chromatograms. If the instrumental acquisition speed is sufficient, each droplet is observed as a peak in the chromatogram, with peaks arising at the rate of droplet generation.

DTIMS Q-TOF Coupling Interfacing the droplet microfluidic chip with an Agilent 6560 IM-Q-TOF (Agilent Technologies, Santa Clara, CA, USA) required incorporation of a stainless-steel emitter of approximately 12 cm in length into the device. The chip was carefully removed from a supporting glass slide and the stainless-steel emitter threaded through a metal union, conductive ferrule and a finger tight screw, before being placed in the nESI source probe as indicated in the photograph in Figure S3B. The outer casing of the nESI probe was replaced and the probe inserted vertically into the source (Figure 1A). The position of the stainless-steel capillary emitter between the MS inlet and the counter electrode can be observed *via* the internal camera.

Figure 2 shows droplet infusion from a solution of leucine enkephalin occurring at ~ 5 Hz (optical analysis data not shown), with a commensurate frequency for mass spectrometry

detection as determined by the total ion chromatogram (TIC) (Figure 2A). Akin to chromatography, a mass spectrum can then be extracted for an individual droplet, Figure 2B shows the mass spectrum of leucine enkephalin acquired from a single droplet. The Agilent Q-TOF acquisition range is restricted to ± 50 mass units from the parent ion mass of intact leucine enkephalin (m/z 556.27), to facilitate enhanced sensitivity for targeted detection of the species of interest. To detect each droplet produced at 5 Hz, the Q-TOF scan speed was set to 35 scans/s in the acquisition software giving ~7 scans per droplet TIC. This scan rate is sufficient to delineate the analyte signal from each droplet and the maximum permitted scan rate (50 scans/s) provides a little more resolution between droplets. For higher droplet infusion frequencies (10 Hz and above), the resolution is compromised, and a faster acquisition system would be needed to capture all of the mass spectrometry information from each droplet.

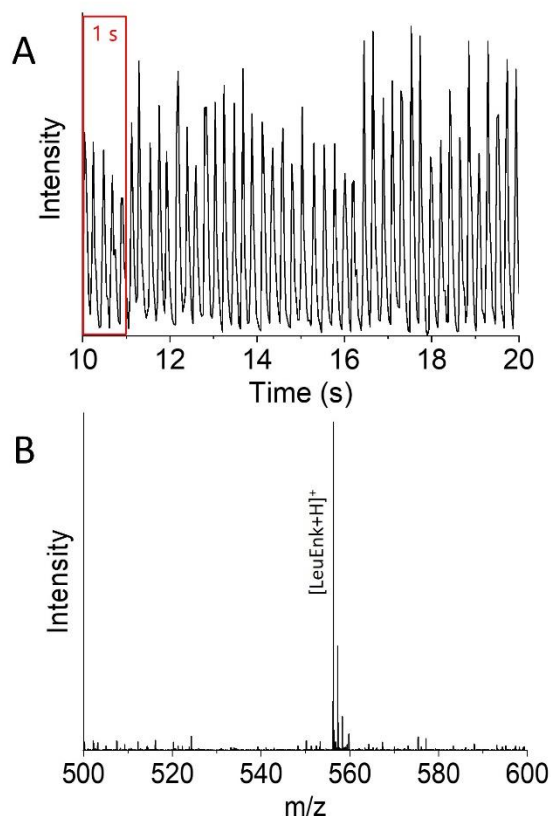


Figure 2. Total Ion Chromatogram (TIC) acquired during infusion of droplets (~2.1 nL) containing leucine enkephalin (LeuEnk) at an infusion rate of approximately 5 droplets per second (Hz). Each individual peak indicates one droplet reaching the Agilent 6560 IM-Q-TOF detector. Mass Spectrum (m/z range 500-600) acquired from one droplet containing LeuEnk, ($[\text{LeuEnk}+\text{H}]^+ = 556.27$ Da).

TWIMS Q-TOF Coupling The microfluidic chip was mounted on a Waters nESI source with micro-sprayer for infusion into a Waters SYNAPT G2Si Q-TOF (Waters Corp., Milford, MA, USA) (Figure 1B). Due to the dimensions of the micro-sprayer device, a shorter stainless-steel emitter (approximately 6 cm) was incorporated into the droplet generation device, which also reduces the back pressure on the droplets. Upon insertion of the stainless-steel emitter to the micro-sprayer assembly, the emitter was fastened in place by tightening the supporting screw, and the glass slide secured to the base

of the micro-sprayer using Blu Tack (Figure 1B). A ~ 1 mm protrusion of the stainless-steel emitter from the micro-sprayer outlet was found to be optimal for stable electrospray.

Mounting of the micro-sprayer-chip construct on to the Waters nESI source XYZ stage (Figure 1B and S4B) allowed the emitter to be optimally positioned perpendicular to the source inlet cone. As droplets are generated and reach the end of the stainless-steel emitter, the electrospray voltage (~2.8 kV) applied directly to the emitter allows for the generation of an electrospray plume. This is assisted by a coaxial flow of nitrogen (1.5 Bar) (Figure 1B insert). As for data obtained from the Agilent 6560 IM-Q-TOF instrument, droplet peaks in the TIC are observed at a frequency close to that of droplet generation. A TIC obtained from this instrument is indicated in Figure 3A, with droplet generation occurring at a rate of approximately 9 Hz. The acquisition speed utilised during this experiment was equal to 0.016 s, with an interscan delay of 0.010 s, corresponding to ~38 scans/s. This is the maximum permitted speed for MS data acquisition on this platform. The droplets infused during this experiment are approximately 0.8 nL in volume and contain the equivalent of 700 pg of ubiquitin within an ammonium acetate solution. Figure 3B shows the extracted mass spectrum obtained from 1 of these droplet TICs, indicating that under these conditions, as for nESI from an equivalent concentration of aqueous ammonium acetate the major charge ions observed for this protein are $[M+6H]^{6+}$ and $[M+5H]^{5+}$. (Ubiquitin intact mass ~8.6 kDa).

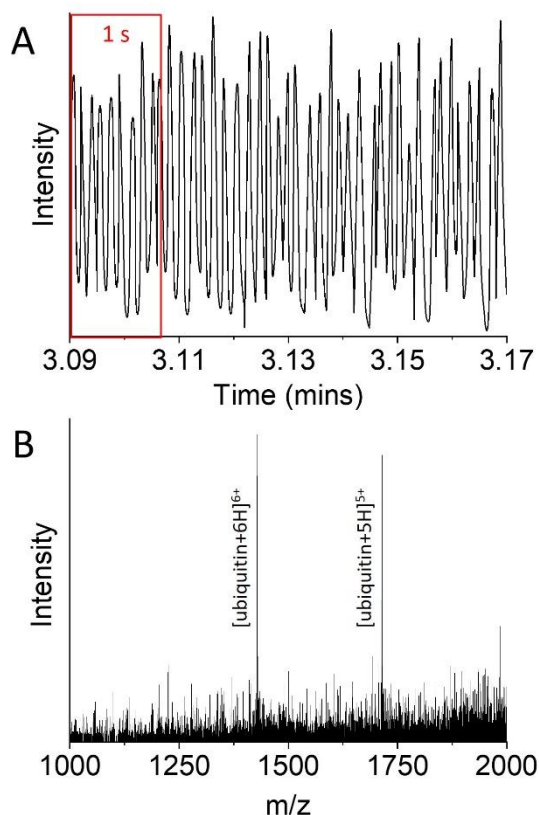


Figure 3. A) Total Ion Chromatogram (TIC) acquired during infusion of droplets (~0.8 nL) containing ubiquitin at an infusion rate of approximately 9 droplets per second (Hz). Each individual peak indicates one droplet reaching the SYNAPT G2Si detector. B) Mass spectrum extracted from 1 droplet peak con-

taining ubiquitin, indicating the two major charge states observed under these conditions (1714.59 m/z , 5+ and 1428.43 m/z , 6+).

Orbitrap Coupling Interfacing the microfluidic chip with the Thermo Fisher Scientific Q Exactive (Waltham, MA, USA) nESI source followed a similar approach to that for the Waters instrument above. The chip, mounted upon a glass slide, incorporated a ~6 cm stainless steel emitter, which was inserted through the rear of the nano-source tip holder and secured in place using a stainless-steel nut, (Figure 1C). The emitter position can be adjusted using the XYZ stage. In this arrangement, the electrospray voltage (~2.4 kV) is applied continuously to the chip emitter as droplets are being generated and subsequently infused.

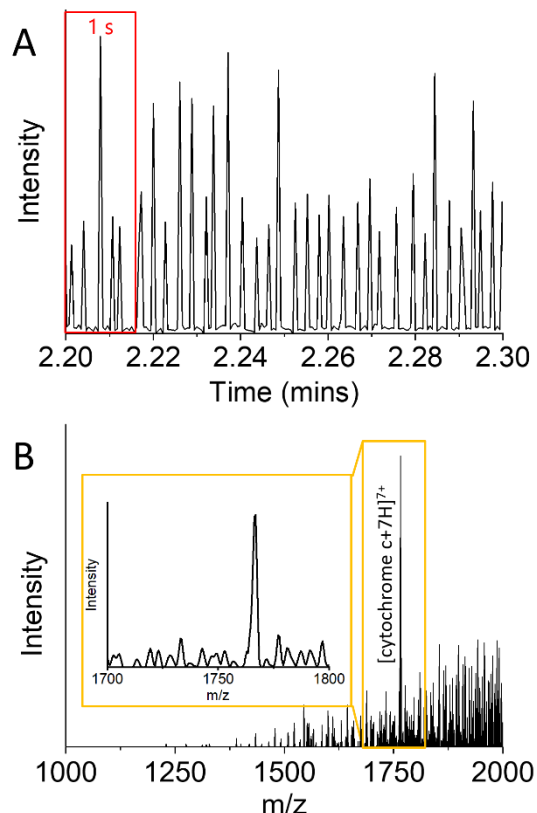


Figure 4. A) Extracted Ion Chromatogram (EIC) acquired during infusion of droplets (~0.8 nL) containing cytochrome c at an infusion rate of approximately 6 droplets per second (Hz). Each individual peak indicates one droplet reaching the Thermo Scientific Q Exactive detector. B) Mass Spectrum (m/z range 1000-2000) acquired from one droplet containing cytochrome c, indicating the most prominent charge state (1766.60 m/z , 7+) in this m/z range. The spectrum inset illustrates the lack of isotopic resolution achieved for the 7+ charge state.

A similar result to that of the previous instruments discussed is observed, with microdroplets appearing as discrete peaks in the TIC as they are infused (Figure 4). The irregularity in droplet frequency and intensity is attributed to a mismatch between the acquisition frequency and the droplet infusion rate, whereby the acquisition of data (comprising both AGC and trap fill time) occurs at intervals which do not exactly coincide with the presence of a droplet. In order to obtain the maximum scan rate of

this instrument, a decrease in the instrumental resolution is required, whereupon an instrumental scan rate of 30.3 Hz is attainable. For microdroplet infusion in the range of 6 Hz (as seen in Figure 4A) such an acquisition rate is achievable, however, the lack of resolving power means that for massive ions, the isotopic resolution is lost. This is demonstrated here for the ~12.2 kDa protein cytochrome c (inset, Figure 4B). This is a feature of FT-MS and if isotopic resolution is required, coupling orbitrap instruments in their current inceptions to such high-throughput sample delivery will be limited to small molecule and more targeted detection.

Fast Scanning Acquisition – TWIMSQ-TOF To increase the throughput achieved upon the Waters SYNAPT G2Si instrument, a faster scanning acquisition mode was implemented

as a variant of the SONAR acquisition mode developed by Waters for rapid data-independent acquisition.³⁸ In this mode, the instrument is essentially operating in a standard MS mode, but additional spectra are accumulated using the SYNAPT's ion mobility acquisition architecture. In this way, one acquisition cycle comprises 200 sequentially acquired 'spectral bins' obtained in the same time as one original MS scan. This allows a potential increase from ~38.5 spectra/s to 7,700 spectra/s, however, for the purpose of these 'proof of concept' experiments, the acquisition cycle time was fixed at 1 s therefore; the acquisition rate was equivalent to 200 spectra/s, representing an approximately five-fold increase in sampling points.

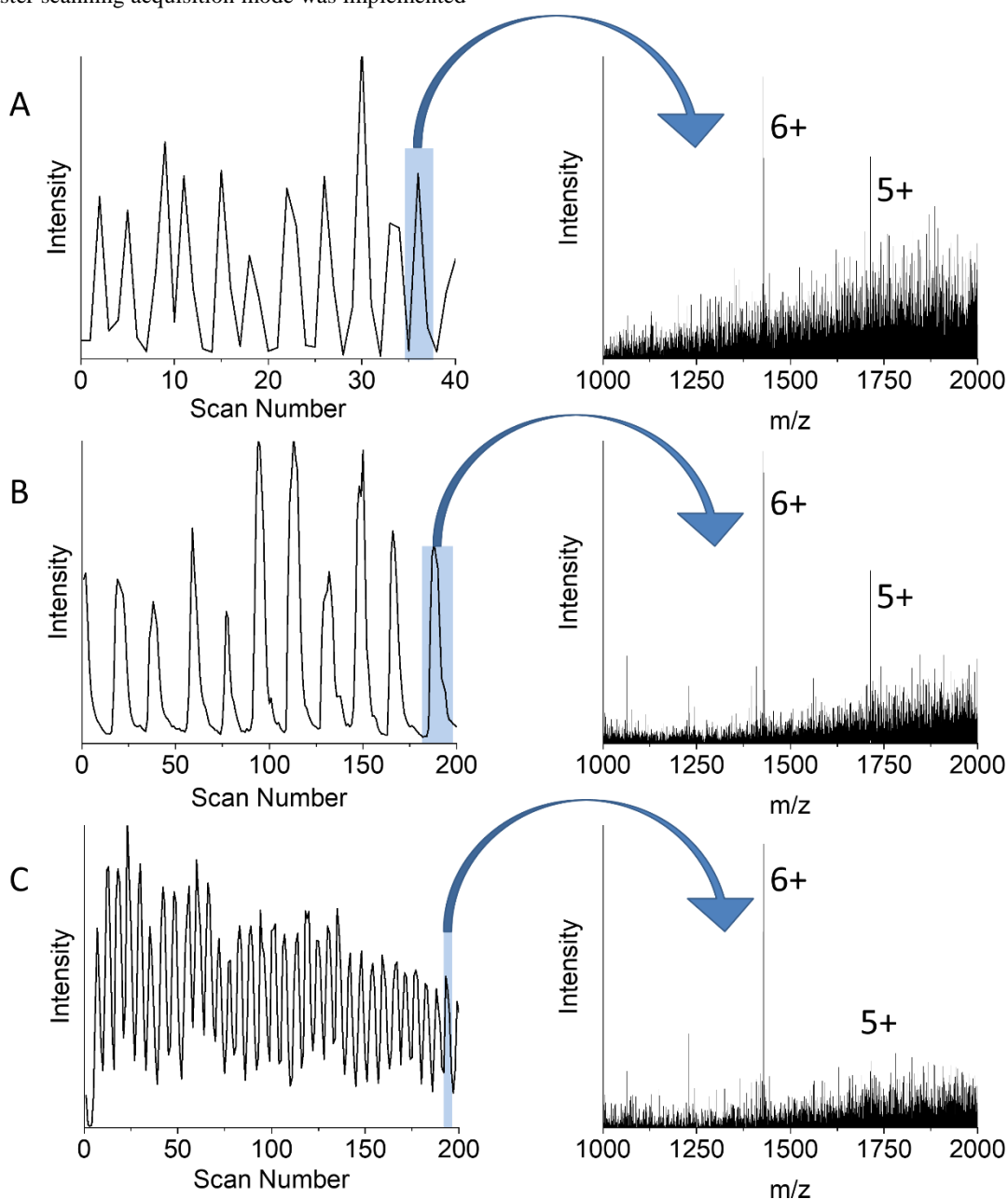


Figure 5. Data acquired using droplets of 60 μM ubiquitin and different acquisition modes on the SYNAPT at varying microdroplet infusion rates. Each mode is accompanied by a mass spectrum extracted from one droplet. A) TIC obtained from a microdroplet infusion rate of 11 Hz acquired in standard MS mode with a scan time of 0.016 s, (1s, ~40 scans shown). B) TIC obtained at the same infusion rate but acquired using the fast-scanning acquisition mode (1 s, 200 scans shown). C) TIC obtained using the fast-scanning mode, but at an increased infusion rate of 33 Hz (1 s, 200 scans shown).

The interface utilised between chip and mass spectrometer was akin to that presented in Figure 1B, with identical channel dimensions employed. Initially, the microdroplet infusion rate generated from a solution of ubiquitin (~60 μM) reached 11 Hz prior to the activation of the fast scanning acquisition mode to confirm droplet detection at the upmost Q-TOF scan rate, with detection at this rate observed in Figure 5A. However, the limited number of points gathered per droplet peak results in trilateral peak shapes and does not allow for a further increase in droplet infusion. Activating the fast scanning acquisition and applying a scan time of 1 s, allows droplets to be visualised in the drift time real-time display (not shown) as individual peaks similar to that seen within the total ion chromatogram. This real-time display also allowed for further tuning of the instrumentation to improve the stability of infusion and droplet peak shape. Direct visualisation of the data acquired in this mode was possible *via* DriftScope (version 2.8, Waters Corp., Milford, MA, USA). However, for convenience and compatibility with existing software, a script was written and used to unpack the mobility file structure into a continuous 'chromatogram-like' output prior to data analysis (Figure 5B and C). This total ion chromatogram can be extracted to obtain a mass spectrum for each individual droplet with MassLynx (version 4.2, SCN893, Waters Corp., Milford, MA, USA). Comparing Figure 5A with 5B, each chromatogram has been obtained with a droplet infusion frequency of ~11 Hz, and Figure 5B has an increased number of mass spectra across each peak. Droplet peaks are therefore sampled at a higher frequency more accurately representing the underlying peak shape. Increasing the acquisition frequency (i.e. scan rate) allows for a further increase in droplet infusion rate. This is illustrated in Figure 5C where now the rate is increased to 33 Hz. Further increases in throughput may be possible through the optimisation of device design, specifically, the channel and stainless-steel emitter dimensions. The microdroplet throughput reported here demonstrates a greater than 10-fold improvement on the detected infusion rate reported by Smith *et al.* in 2013 for microdroplet reinjection (2.6 Hz).²⁴ Operation at this infusion rate of 33 Hz potentially enables the analysis of over 2.8 million samples (Table 1.) in one 24-hour period. Label-free MS sample throughputs at these speeds would revolutionise screening approaches in areas which rely on indirect measurements or those which require additional labelling procedures due to the MS ability to distinguish compounds by molecular weight. More specifically, applications within synthetic biology and biotechnology have the potential to benefit most from the fusion of high-throughput droplet microfluidics with MS; screening for both improved genetic variations and reaction conditions often require considerable time and resources. In addition, the high flexibility of microfluidic chip design and the ability to encapsulate cells within droplets also complements the evaluation and miniaturisation of synthetic biology assays.

Instrument Comparison Each instrument platform has advantages and disadvantages in terms of the ease with which the chip-based inlet can be incorporated into the mass spectrometer. We found the Waters nESI source simplest to couple to our chip-based inlet. The emitter can be simply inserted through the micro-sprayer, with the bulk of the chip remaining on the XYZ stage platform, allowing for both easy access to the fluidic inlets and convenient alteration of the XYZ stage location. The Thermo nESI source utilises a similar facile insertion of the

emitter however, there is no extended platform for the device to be mounted upon. A temporary support was installed (Figure S5) to address this issue, a more robust solution could be used which allows xyz adjustment. The most cumbersome of the three arrangements, during both assembly and use, was the Agilent Nanospray source due to the encapsulation of the chip and emitter inside the nESI probe. Insertion of the probe into the source region without due care risked emitter damage and positioning it in an optimal location between the source inlet and the counter electrode was non-trivial due to the nature of the stage controls. Future modifications would seek to locate the infusion pumps proximal to a modified probe to optimise access to the fluidic connections.

Despite the challenges involved in mounting a chip-based inlet into the Agilent source, the ESI configuration wherein the capillary/emitter is grounded wrt a source held at lower potential was advantageous to droplet stability. The droplets remained intact and were not prone to coalescence. Application of a positive potential to the emitter, as implemented in the Waters SYNAPT and Thermo Scientific Q Exactive ESI sources, is acceptable for microdroplet generation, however, we had greater difficulties in a droplet reinjection workflow (such as that described by Smith *et al.*).²³ Application of a voltage to a pre-generated solution of droplets was found to cause coalescence of the collected droplets.

When considering high-speed acquisition, the Agilent 6560 has the highest user accessible rate for data collection (50 scans/s); the Waters SYNAPT is similar (~38 scans/s). The requirement to include some form of delay in which data is not recorded, between each acquisition block may cause droplet information to be missed when infusing at such high rates. The Q Exactive FT-MS offers the lowest acquisition speed of the three instruments, and a decrease in mass resolution accompanies operation at the highest acquisition rate ~30 scans/s. This may curtail uHTS utilization on FT-MS instruments, although the Q Exactive performs well at infusion rates of 1 Hz or lower, which will be adequate for many applications. TOF instrumentation offers increased MS acquisition speeds with the potential to exploit the intrinsically high TOF pusher rate, governed by the acceleration voltage and the longest time of flight of a given ion. Currently, the restrictions on this acquisition rate are a consequence of a combination of hardware, system bandwidth and operating system speed, including manufacturers' software, and practical data file size constraints. Whilst collecting each TOF spectrum individually is conceptually possible without compromising mass resolving power, one must also consider the effect on the resulting in-spectra dynamic range.

Table 1. Sample throughput per unit time when continuously infusing droplets under fast scanning acquisition conditions on the Waters SYNAPT Q-TOF instrument.

Infusion Rate (Hz)	Samples per minute	Samples per hour	Samples per day (24 hr)
11	660	39600	950400
33	1980	118800	2851200

Table 2: Table summarising the user accessible MS acquisition scan speeds, advantages and disadvantages of the three instrumental configurations assessed in this article when coupled with droplet microfluidics. * User accessible MS acquisition scan speed and droplet frequency detected when SONAR technology is employed. ‡ The droplet sizes and frequencies stated correspond to the conditions described in this article.

Instrument Type	DTIMS Q-TOF	TWIMS Q-TOF	Orbitrap (FT-MS)
Instrument model	Agilent 6560 IM-Q-TOF	Waters SYNAPT G2Si	Thermo Fisher Q Exactive
Fastest scan speed	50 scans/s	38 scans/s, 7700 scans/s*	30 scans/s
Coupling ease	Difficult	Easy	Easy
Advantages	Grounded emitter Fastest user accessible scan/s	Easy coupling SONAR technology addition	Easy coupling
Disadvantages	Stage controls not intuitive Interscan delay not variable Mounted chip not visible during usage	Voltage applied to emitter Interscan delay ESI source accessibility	Voltage applied to emitter Interscan delay not visible Isotopic resolution lost when increasing scan speed
Droplet frequency detected ‡	5 Hz	11 Hz, 33 Hz*	6 Hz
Droplet Size ‡	2.1 nL	0.8 nL	0.8 nL

Conclusions and Outlook. We have demonstrated the coupling of microdroplet microfluidics with mass spectrometry on three instruments platforms from different MS vendors. The microfluidic device with the incorporated emitter is readily interfaced with commercially available nESI sources without extensive modifications allowing for an infusion of microdroplets up to a rate of 9 Hz. Discrete droplets are easily visualised within the total and extracted ion chromatograms from which mass spectra for each individual droplet can be obtained. Upon assessment of the three instruments, we have found the Waters nESI source to be marginally the most accessible, due to the ease at which the device could be integrated into the micro-sprayer adaption, although all sources required some modification and more would be required for optimal permanent use. Application of the voltage directly to the ESI emitter is adequate for infusion but causes droplet coalescence when working with pre-defined droplets (i.e. droplet reinjection). We are currently working on further modifications to the chips and the sources to prevent this.

All three mass spectrometers utilised in this study were capable of detecting droplets infused at a rate of 5 Hz and above. The Agilent 6560 IM-Q-TOF harnesses the highest speed of 50 scans/s in its commercial configuration, however with additional fast scanning acquisition software available for Waters instruments, detection of increased droplet infusion and has been demonstrated here up to and over a rate of 30 Hz. We believe this can be improved upon further through alteration of the microfluidic channel dimensions and emitter specifications and envision infusion at a rate of 100 Hz achievable in the future. We have demonstrated the ability of droplet infusion of salty samples of peptides and proteins, since we aim to develop biotechnological application for uHTS, but we envisage a broader

class of molecules and accompanying scientific challenges that could benefit from such rapid information rich analysis.

ASSOCIATED CONTENT

Supporting Information

PDF file containing additional mass spectra, instrument assembly photographs, and chip fabrication procedures.

AUTHOR INFORMATION

Corresponding Author

* E-mail: Perdita.Barran@manchester.ac.uk.

Author Contributions

All authors have given approval to the final version of the manuscript.

ACKNOWLEDGMENT

The authors would like to acknowledge the support of Waters Corporation (Manchester, UK) for use of their fast scanning acquisition software and Sphere Fluidics Ltd (Cambridge, UK) for their expertise in droplet microfluidic chip design and fabrication. We would also like to acknowledge the Centre for Mesoscience and Nanofabrication (Manchester, UK), for the use of their cleanroom facilities and equipment. Funding for this work has been provided through a BBSRC DTP CASE studentship to EK (BB/M011208/1) and includes sponsorship from Sphere Fluidics Ltd. Additionally, we are grateful for the funding of our SYNBIOCHEM Centre (BB/M017702/1) in which the Sphere Fluidics Picodroplet Single Cell Encapsulation System is situated.

REFERENCES

- (1) Mayr, L. M.; Bojanic, D. Novel Trends in High-Throughput

- Screening. *Curr. Opin. Pharmacol.* **2009**, *9* (5), 580–588.
- (2) Inglese, J.; Johnson, R. L.; Simeonov, A.; Xia, M.; Zheng, W.; Austin, C. P.; Auld, D. S. High-Throughput Screening Assays for the Identification of Chemical Probes. *Nat. Chem. Biol.* **2007**, *3* (8), 466–479.
 - (3) Szymański, P.; Markowicz, M.; Mikiciuk-Olasik, E. Adaptation of High-Throughput Screening in Drug Discovery-Toxicological Screening Tests. *Int. J. Mol. Sci.* **2012**, *13* (1), 427–452.
 - (4) de Raad, M.; Fischer, C. R.; Northen, T. R. High-Throughput Platforms for Metabolomics. *Curr. Opin. Chem. Biol.* **2016**, *30*, 7–13.
 - (5) Hertzberg, R. P.; Pope, A. J. High-Throughput Screening: New Technology for the 21st Century. *Curr. Opin. Chem. Biol.* **2000**, *4* (4), 445–451.
 - (6) Hodder, P.; Mull, R.; Cassaday, J.; Berry, K.; Strulovici, B. Miniaturization of Intracellular Calcium Functional Assays to 1536-Well Plate Format Using a Fluorometric Imaging Plate Reader. *J. Biomol. Screen.* **2004**, *9* (5), 417–426.
 - (7) Yadav, M.; Contractor, P.; Upadhyay, V.; Gupta, A.; Guttikar, S.; Singhal, P.; Goswami, S.; Shrivastav, P. S. Automated Liquid-Liquid Extraction Based on 96-Well Plate Format in Conjunction with Ultra-Performance Liquid Chromatography Tandem Mass Spectrometry (UPLC-MS/MS) for the Quantitation of Methoxsalen in Human Plasma. *J. Chromatogr. B Anal. Technol. Biomed. Life Sci.* **2008**, *872* (1–2), 167–171.
 - (8) Peng, S. X.; Branch, T. M.; King, S. L. Fully Automated 96-Well Liquid-Liquid Extraction for Analysis of Biological Samples by Liquid Chromatography with Tandem Mass Spectrometry. *Anal. Chem.* **2001**, *73* (3), 708–714.
 - (9) Bilitewski, U. Protein-Sensing Assay Formats and Devices. *Anal. Chim. Acta* **2006**, *568* (1–2), 232–247.
 - (10) Syahir, A.; Usui, K.; Tomizaki, K.; Kajikawa, K.; Mihara, H. Label and Label-Free Detection Techniques for Protein Microarrays. *Microarrays* **2015**, *4* (2), 228–244.
 - (11) Whitesides, G. M. The Origins and the Future of Microfluidics. *Nature* **2006**, *442* (7101), 368–373.
 - (12) Stone, H. A.; Stroock, A. D.; Ajdari, A. Engineering Flows in Small Devices. *Annu. Rev. Fluid Mech.* **2004**, *36* (1), 381–411.
 - (13) McDonald, J. C.; Whitesides, G. M. Poly(Dimethylsiloxane) as a Material for Fabricating Microfluidic Devices. *Acc. Chem. Res.* **2002**, *35* (7), 491–499.
 - (14) Guo, M. T.; Rotem, A.; Heyman, J. A.; Weitz, D. A. Droplet Microfluidics for High-Throughput Biological Assays. *Lab Chip* **2012**, *12* (12), 2146–2155.
 - (15) Teh, S. Y.; Lin, R.; Hung, L. H.; Lee, A. P. Droplet Microfluidics. *Lab Chip* **2008**, *8* (2), 198–220.
 - (16) Varma, V. B.; Ray, A.; Wang, Z. M.; Wang, Z. P.; Ramanujan, R. V. Droplet Merging on a Lab-on-a-Chip Platform by Uniform Magnetic Fields. *Sci. Rep.* **2016**, *6* (November), 1–12.
 - (17) Colin, P.-Y.; Kintsjes, B.; Gielen, F.; Miton, C. M.; Fischer, G.; Mohamed, M. F.; Hyvönen, M.; Morgavi, D. P.; Janssen, D. B.; Hollfelder, F. Ultrahigh-Throughput Discovery of Promiscuous Enzymes by Picodroplet Functional Metagenomics. *Nat. Commun.* **2015**, *6*, 10008.
 - (18) Zinchenko, A.; Devenish, S. R. A.; Kintsjes, B.; Colin, P. Y.; Fischlechner, M.; Hollfelder, F. One in a Million: Flow Cytometric Sorting of Single Cell-Lysate Assays in Monodisperse Picolitre Double Emulsion Droplets for Directed Evolution. *Anal. Chem.* **2014**, *86* (5), 2526–2533.
 - (19) Seemann, R.; Brinkmann, M.; Pföhl, T.; Jin, B.; Kim, Y. W.; Lee, Y.; Lagus, T. P.; Edd, J. F. Droplet Generating Device for Droplet-Based μ TAS Using Electro-Conjugate FI Uid.
 - (20) He, M.; Edgar, J. S.; Jeffries, G. D. M.; Lorenz, R. M.; Shelby, J. P.; Chiu, D. T. Selective Encapsulation of Single Cells and Subcellular Organelles into Picoliter- and Femtoliter-Volume Droplets. *Anal. Chem.* **2005**, *77* (6), 1539–1544.
 - (21) Anna, S. L.; Bontoux, N.; Stone, H. A. Formation of Dispersions Using “Flow Focusing” in Microchannels. *Appl. Phys. Lett.* **2003**, *82* (3), 364–366.
 - (22) Wink, K.; Mahler, L.; Beulig, J. R.; Piendl, S. K.; Roth, M.; Belder, D. An Integrated Chip-Mass Spectrometry and Epifluorescence Approach for Online Monitoring of Bioactive Metabolites from Incubated Actinobacteria in Picoliter Droplets. *Anal. Bioanal. Chem.* **2018**.
 - (23) Smith, C. A.; Li, X.; Mize, T. H.; Sharpe, T. D.; Graziani, E. L.; Abell, C.; Huck, W. T. S. Sensitive, High Throughput Detection of Proteins in Individual, Surfactant-Stabilized Picoliter Droplets Using Nanoelectrospray Ionization Mass Spectrometry. *Anal. Chem.* **2013**, *85*, 3812–3816.
 - (24) Cecchini, M. P.; Hong, J.; Lim, C.; Choo, J.; Albrecht, T.; DeMello, A. J.; Edell, J. B. Ultrafast Surface Enhanced Resonance Raman Scattering Detection in Droplet-Based Microfluidic Systems. *Anal. Chem.* **2011**, *83* (8), 3076–3081.
 - (25) Lin, Y.; Schiavo, S.; Orjala, J.; Vouros, P.; Kautz, R. Microscale LC-MS-NMR Platform Applied to the Identification of Active Cyanobacterial Metabolites. *Anal. Chem.* **2008**, *80* (21), 8045–8054.
 - (26) Yelleswarapu, V. R.; Jeong, H.-H.; Yadavali, S.; Issadore, D. Ultra-High Throughput Detection (1 Million Droplets per Second) of Fluorescent Droplets Using a Cell Phone Camera and Time Domain Encoded Optofluidics. *Lab Chip* **2017**, *17* (6), 1083–1094.
 - (27) Appelqvist, L.-A.; Melin, K.-A. An Autosampler for Solvent-Free Sample Introduction into a Gas Chromatograph. *Lipids* **1967**, *2* (4), 351–352.
 - (28) Pento, Z. Headspace Measurement of Ethanol in Blood by Gas Chromatography with a Modified Autosampler. *Clin. Chem.* **1985**, *31* (3), 439–441.
 - (29) Marshall, A. G.; Hendrickson, C. L. High-Resolution Mass Spectrometers. *Annu. Rev. Anal. Chem.* **2008**, *1* (1), 579–599.
 - (30) Kameoka, J.; Orth, R.; Ilic, B.; Czaplowski, D.; Wachs, T.; Craighead, H. G. An Electrospray Ionization Source for Integration with Microfluidics. *Anal. Chem.* **2002**, *74* (22), 5897–5901.
 - (31) Hoffmann, P.; Häusig, U.; Schulze, P.; Belder, D. Microfluidic Glass Chips with an Integrated Nanospray Emitter for Coupling to a Mass Spectrometer. *Angew. Chemie - Int. Ed.* **2007**, *46* (26), 4913–4916.
 - (32) Lee, J.; Soper, S. A.; Murray, K. K. Microfluidic Chips for Mass Spectrometry-Based Proteomics. *J. Mass Spectrom.* **2009**, *44* (5), 579–593.
 - (33) Fidalgo, L. M.; Whyte, G.; Ruotolo, B. T.; Benesch, J. L. P.; Stengel, F.; Abell, C.; Robinson, C. V.; Huck, W. T. S. Coupling Microdroplet Microreactors with Mass Spectrometry: Reading the Contents of Single Droplets Online. *Angew. Chemie - Int. Ed.* **2009**, *48* (20), 3665–3668.
 - (34) Fidalgo, L. M.; Whyte, G.; Bratton, D.; Kaminski, C. F.; Abell, C.; Huck, W. T. S. From Microdroplets to Microfluidics: Selective Emulsion Separation in Microfluidic Devices. *Angew. Chemie - Int. Ed.* **2008**, *47* (11), 2042–2045.
 - (35) Kelly, R. T.; Page, J. S.; Marginean, I.; Tang, K.; Smith, R. D. Dilution-Free Analysis from Picoliter Droplets by Nano-Electrospray Ionization Mass Spectrometry. *Angew. Chemie Int. Ed.* **2009**, *48* (37), 6832–6835.
 - (36) Steyer, D. J.; Kennedy, R. T. High-Throughput Nanoelectrospray Ionization-Mass Spectrometry Analysis of Microfluidic Droplet Samples. *Anal. Chem.* **2019**, *91*, 6645–6651.
 - (37) Tang, S.; Whitesides, G. Basic Microfluidic and Soft Lithographic Techniques. In *Optofluidics: Fundamentals, Devices, and Applications*; 2010; pp 7–32.
 - (38) Sinclair, I.; Bachman, M.; Addison, D.; Rohman, M.; Murray, D. C.; Davies, G.; Mouchet, E.; Tonge, M. E.; Stearns, R. G.; Ghislain, L.; et al. Acoustic Mist Ionization Platform for Direct and Contactless Ultrahigh-Throughput Mass Spectrometry Analysis of Liquid Samples. *Anal. Chem.* **2019**, *91* (6), 3790–3794.

