

# Design, Synthesis and Characterization of Covalent KDM5 Inhibitors

Saleta Vazquez-Rodriguez,<sup>+</sup> Miranda Wright,<sup>+</sup> Catherine M. Rogers, Adam Cribbs, Srikannathasan Velupillai, Martin Philpott, Henry Lee, James E. Dunford, Kilian V. M. Huber, Matthew B. Robers, James D. Vasta, Marie-Laetitia Thezenas, Sarah Bonham, Benedikt Kessler, James Bennett, Oleg Fedorov, Florence Raynaud, Adam Donovan, Julian Blagg, Vassilios Bavetsias, Udo Oppermann, Akane Kawamura,\* Paul E. Brennan\*

**Abstract:** Histone lysine demethylase (KDMs) are involved in the dynamic regulation of gene expression and they play a critical role in several biological processes. Achieving selectivity over the different KDMs has been a major challenge for KDM inhibitor development. Here we report potent and selective KDM5 covalent inhibitors designed to target cysteine residues only present in the KDM5 subfamily. The covalent binding to the targeted proteins was confirmed by MS and time-dependent inhibition. Additional competition assays show that compounds were non 2-OG competitive. Target engagement and ChIP-seq analysis showed that the compounds inhibited the KDM5 members in cells at nano- to micromolar levels and induce a global increase of the H3K4me3 mark at transcriptional start sites.

Histone proteins can be covalently modified by a plethora of post-translational marks including methylation. These modifications modulate chromatin structure which impacts gene expression, chromosome packaging and DNA damage repair. Methylation is a reversible process regulated by histone

methyltransferases (HMTs) and lysine demethylases (KDMs) that control the methylation state (mono- di- or tri-methylation) of lysine residues in histone tails.<sup>[1]</sup> There larger classes of KDMs, the Jumonji-C domain containing lysine demethylases (JmjC-KDMs) utilize Fe(II) and 2-oxoglutarate (2-OG) to oxidise methylated lysine substrates to form an unstable hemiaminal which fragments to the demethylated lysine and formaldehyde.<sup>[2]</sup>

JmjC-KDMs are a family of 20 human enzymes which are further categorized into subfamilies KDM2-7.<sup>[3]</sup> There are four enzymes in the KDM5 subfamily (KDM5A-D) which can all demethylate di- and tri-methylated lysine 4 of histone 3 (H3K4me2/3), ubiquitous histone marks necessary for transcriptional activation. Various studies have linked the KDM5s to different cancers, in particular overexpression of KDM5B has been observed in prostate, gastric, breast, ovarian and hepatic cancer cells.<sup>[4]</sup> KDM5B also has a role in development by blocking differentiation of embryonic and hepatopoietic stem cells.<sup>[5]</sup> the KDM5s have therefore become increasingly popular targets for chemical probe and drug discovery to gain a greater understanding of their role in biology and as oncology targets.

Several small-molecule inhibitors of have been reported.<sup>[6]</sup> They bind to KDM5s through coordination to the active site Fe(II) in the 2-OG binding site and form a salt bridge with a conserved lysine or hydrogen bond to a conserved tyrosine residue in the KDM5 subfamily. Although nanomolar enzyme IC<sub>50</sub>'s are reported, cellular activities are commonly much weaker which has been attributed to competition of the inhibitors with higher levels of competing substrate in cells (2-OG ~1 mM)<sup>[7]</sup> compared to that used in biochemical assay conditions (low μM range), a factor known to reduce kinase inhibitor efficacy.<sup>[8]</sup> Although KDM5 inhibitors have shown good selectivity over KDM2/3/6, selectivity over the KDM4 subfamily has proven more challenging as the primary binding residues of the catalytic domain are conserved in KDM4 and KDM5. Selectivity has only been achieved through structural changes in the secondary shell. For example, cyanopyrazole **CPI-455** is a potent, selective KDM5 inhibitor with nanomolar enzyme IC<sub>50</sub>, but micromolar cellular IC<sub>50</sub>.<sup>[9]</sup> Further optimisation led to *tert*-butyl pyrazole **1**<sup>[10]</sup> which showed improved cellular activity (Figure 1B). Potent KDM5 inhibitors, such as **2**, incorporating a 8-pyrazolopyridopyrimidinone core were published, however this series suffered from poor selectivity over KDM4 and poor cellular potency despite cellular permeability.<sup>[11]</sup>

Here we report two series of KDM5 selective covalent inhibitors based on cyanopyrazole **CPI-455** and pyridopyrimidinone **2** with improved selectivity that target key cysteines exclusive to the KDM5s. Irreversible binding of the protein to the inhibitor resulted in reduced competition with the 2-OG cosubstrate and maintained their cellular activity despite low cellular permeability. Covalent

[\*] Dr. S. Vazquez-Rodriguez, Dr. M. Wright, Dr. C. M. Rogers, , Dr. S. Velupillai , Dr. K. V. M. Huber, J. Bennett, Dr. O. Fedorov, Prof. U. Oppermann and Prof. Dr P. E. Brennan  
Structural Genomics Consortium & Target Discovery Institute  
University of Oxford, NDM Research Building  
Roosevelt Drive, Oxford, OX3 7DQ and OX3 7FZ (UK)  
E-mail: [paul.brennan@sgc.ox.ac.uk](mailto:paul.brennan@sgc.ox.ac.uk)

Dr. A. Cribbs, Dr. M. Philpott, H. Lee, Dr. J. E. Dunford and Prof. Dr. U. Oppermann  
Botnar Research Center, Nuffield Department of Orthopedics,  
Rheumatology and Musculoskeletal Sciences  
NIHR Oxford BRC, University of Oxford, OX3 7DQ, UK  
Prof. Prof. Dr. U. Oppermann  
FRIAS - Freiburg Institute of Advanced Studies, 79104, Freiburg,  
Germany

Dr. A. Kawamura and Dr. M. Wright  
Chemistry Research Laboratory, University of Oxford,  
12 Mansfield Road, Oxford, OX1 3TA (UK)

Dr. M. B. Robers and Dr. J. D. Vasta  
Promega Corporation  
2800 Woods Hollow Road, Fitchburg,  
Wisconsin 53711, USA

M. L. Thezenas, Dr. S. Bonham and Prof. B. Kessler  
Target Discovery Institute, Nuffield Department of Medicine,  
University of Oxford, Roosevelt Drive, 7FZ Oxford, UK

F. Raynaud, A. Donovan, Prof. Dr. Julian Blagg, Dr. Vassilios  
Bavetsias  
Cancer Research UK Cancer Therapeutics Unit,  
The Institute of Cancer Research,  
15 Cotswold Road, London SM2 5NG, U.K

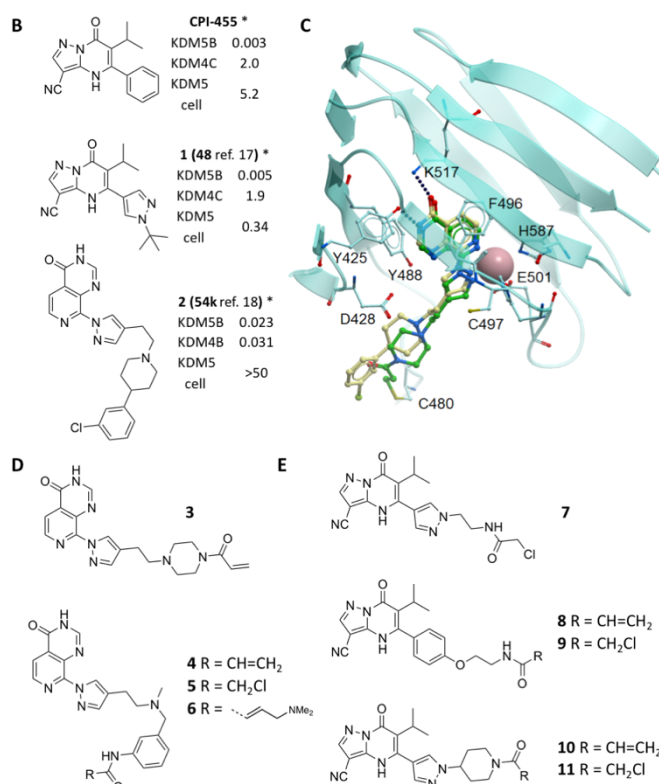
[+] These authors contributed equally to this work.

Supporting information for this article is given via a link at the end of the document

inhibitors are potentially more selective and potent, with better cellular efficiency and can require less frequent and lower doses, although this can be offset by poor selectivity with the cellular cysteome. Covalent inhibitors can also be used as proteomic tools for both covalent and non-covalent drugs.<sup>[12]</sup>

Based on alignments of the JmjC-KDMs, two cysteine residues were identified as potential nucleophiles for covalent modifications in the KDM5 family. C497 in KDM5B was identified as a non-catalytic residue close to the binding site present only in the KDM5 members. In addition, C480 was identified as a unique residue in KDM5B, so improved selectivity could be achieved over KDM4s as well as KDM5A/C/D (Figure 1A). The irreversible binding of the covalent inhibitors to KDM5s could also reduce competition with 2-OG to improve their cellular activity.

KDM5				KDM2		KDM3		KDM4					KDM6			KDM7			
A	B	C	D	A	B	A	B	C	D	E	A	B	C	A	B	C	A	B	C
S	C	S	S						E	E	E	E	E	L	L	L			
464	480	485	495						169	170	171	173	170	1127	1371	1074			
C	C	C	C	D	N	N	A	A	A	A	A	A	P	P	P	D	D	D	
481	497	502	512	210	1558	2334	186	187	188	190	187	1144	1388	1091	280	245	247		



**Figure 1.** A) KDM alignment at positions C480 and C497 (KDM5B numbering); B) Reported KDM5 inhibitors **CPI-455**, **1** and **2**; C) Overlay of compound **2** docked in the X-ray structure of **3** (green) in KDM5B (PDB ID 6EIN); B) PP compounds; D) PZ compounds.

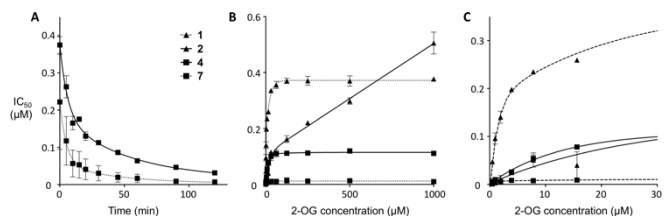
C480 is positioned close to the binding site of previously reported inhibitor<sup>[11]</sup> **2** and was suitable for the design of cysteine-selective electrophiles based on this scaffold. 8-Pyridopyrimidinone-based covalent inhibitors **3-6** (PP series) (Figure 1D) were synthesised (Schemes S1-S2) and acrylamide **3** was co-crystallised with KDM5B to determine the binding mode. Bidentate metal coordination and salt bridging/hydrogen bonding

to K517/Y425 was observed with inhibitor **3** and a covalent bond was seen between the C480 sulfur and acrylamide  $\beta$ -carbon (Figure 1C).

A second series of KDM5 covalent inhibitors **7-11** (PZ series) (Figure 1E) were also designed and synthesized (Schemes S3-S4) to target C497. X-ray crystal structures of **7** and **10** showed the reactive chloroacetyl and acrylamide moieties within proximity of C497 sulfur (**7**, 5.8 Å; **10**, 11.7 Å) (Figure S1) although no covalent bond was seen in the crystal structure. The acrylamide of **10** was positioned further from C497 however compound flexibility could position it within covalent bonding distance. Both compounds maintained the key coordination of the nitrile to the metal centre and h-bonding interactions of the carbonyl oxygen.

Since covalent inhibitors possess time-dependent inhibition due to the kinetics of covalent binding to the protein, their activity was better assessed through determination of the kinetic parameter  $k_{\text{inact}}/K_i$ , rather than a simple IC<sub>50</sub>. These parameters were calculated by using an established method to derive  $K_i$  and  $k_{\text{inact}}$  directly from time-dependant IC<sub>50</sub>'s (Table S1). IC<sub>50</sub> values were measured using an AlphaScreen assay<sup>[14]</sup> by pre-incubating the compounds with KDM5B at different time points ranging from 0 to 120 minutes and the  $k_{\text{inact}}$  and  $K_i$  values determined as previously described.<sup>[13]</sup>

In the PP series, chloroacetamide **5** was the most potent with the highest  $k_{\text{inact}}/K_i$  (40 x 10<sup>3</sup>/Ms) and although acrylamide **4** was less active than **5** with ( $k_{\text{inact}}/K_i$  7.4 x 10<sup>3</sup>/Ms) it showed a drop in IC<sub>50</sub> of 12-fold after an hour incubation (Figure 2A). Dimethylamino crotonamide **6** was less potent than the acrylamide **4** with a  $k_{\text{inact}}/K_i$  of 6.1 x 10<sup>3</sup>/Ms. Acrylamide **4** was 5-fold more potent than the corresponding piperazine acrylamide **3** ( $k_{\text{inact}}/K_i$  1.4 x 10<sup>3</sup>/Ms).



**Figure 2** A) Time-dependent inhibition of covalent inhibitors **4** and **7**; B-C) 2-OG competition assay with non-covalent variants (**1** and **2**) and covalent inhibitors (**4** and **7**).

In the PZ series, chloroacetamide **7** showed the greatest  $k_{\text{inact}}/K_i$  (25 x 10<sup>3</sup>/Ms) with an IC<sub>50</sub> drop of 27-fold upon pre-incubation (Figure 2A). Both acrylamide **10** and chloroacetamide **11** had comparable  $k_{\text{inact}}/K_i$  values of 20 x 10<sup>3</sup> and 19 x 10<sup>3</sup>/Ms, while the phenyl analogues **8** and **9** showed the lowest  $k_{\text{inact}}/K_i$  ratio with 6.9 x 10<sup>3</sup> and 5.8 x 10<sup>3</sup>/Ms, respectively. The larger drop in IC<sub>50</sub> with the PZs compared to the PPs was likely due to the greater contribution of covalency to their potency. Overall, compounds in both series possessed time-dependent inhibition through covalent binding to KDM5B leading to potent nanomolar IC<sub>50</sub> values.

As well as improving their potency, the addition of a covalent electrophile to the inhibitors was expected to reduce competition with 2-OG. IC<sub>50</sub> values of both non-covalent (**1** and **2**) and covalent

inhibitors (**4** and **7**) were therefore determined at different concentrations of 2-OG up to 1000  $\mu\text{M}$  (Figure 2B-C).

In the PP series, the non-covalent analogue **2** showed an approximately 500-fold drop in potency from 0.5  $\mu\text{M}$  up to 1000  $\mu\text{M}$  while the covalent inhibitor **4** showed only an 18-fold lower potency at the high 2-OG concentration. At 1 mM 2-OG, **4** was 4-fold more potent with an  $\text{IC}_{50}$  of 110 nM than **2** which we attribute to improved competition from 2-OG compared to **2** by a factor of 25.

As reported,<sup>[9]</sup> even the non-covalent cyanopyrazoles **CPI-455** and **1** are less competed by 2-OG than the PP series, with compound **1** showing a drop in potency of only 8-fold in the range of 2-OG concentrations measured. As PZ compound **1** and PP compound **2** have similar binding modes based on their crystal structures, it is not clear why they show such different competition behaviour. But the covalent PZ inhibitor **7** was significantly more potent than non-covalent PZ **1** with an  $\text{IC}_{50}$  at the top 2-OG concentration of 10 nM and showed only a small shift in potency of 4-fold with 2-OG concentration. The addition of covalent inhibition to the PZs improved the potency as well as the competition with 2-OG. Covalent inhibitors therefore represent an excellent strategy for solving the issues with KDM inhibitors in which high 2-OG competition could explain their poor cellular activities.

A panel of JmjC KDMs was tested by AlphaScreen to determine the selectivity of the compounds (Table S2).  $\text{IC}_{50}$ 's were measured at 120 minutes when the inhibition of the covalent inhibitors against KDM5B had levelled off (Figure 2A). All the compounds from both series presented selectivity towards KDM5s, with the highest potency for the most closely related KDM5A and 5B. For the PZ series, the most potent compounds against KDM5B contained the 2-chloroacetamide group, with **7** being the most potent of the PZ series (KDM5A/B  $\text{IC}_{50}$  10 nM) and showed the best selectivity profile (Table S3). In the PP series the covalent compounds tested showed high activity with  $\text{IC}_{50}$  in the low nanomolar range against most KDM5 family members.

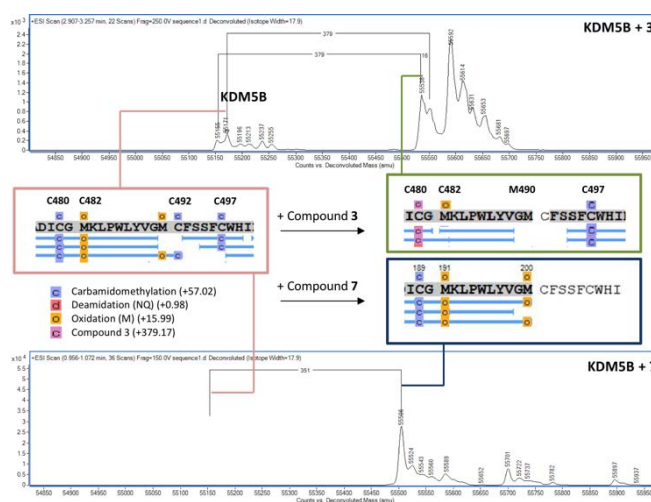
Both PP and PZ series showed the greatest selectivity over KDM2A and 3A with selectivity from 200- to 1500-fold. The covalent inhibitors also demonstrated good selectivity over the most closely related KDM4 subfamily members. In the PP series, methylbenzylamine covalent inhibitors **4-6** showed greater than 20-fold selectivity over the KDM4 family, in particular **5** was more than 60-fold less active on KDM4B. We attribute this selectivity for KDM5B with the covalent PP inhibitors to binding to C480. In the PZ series, all compounds were more than 50-fold selective over all the KDM4 family members, with compounds **7** and **10** having >500-fold selectivity over KDM4A/B.

When comparing the activity of the compounds in the KDM5 family members, both series were equipotent against KDM5A/B/D, but 30–100-fold selective over KDM5C. In the PP series, compound **6** was the most selective with greater than 7-fold selectivity for KDM5B over KDM5A/C/D which could be explained by specific binding to C480. In the PZ series, the most selective compound was chloroacetamide **11** showing the highest selectivity for KDM5B with more than 100-fold over KDM5C.

Covalent binding of the inhibitors with KDM5B was confirmed through MS-labelling experiments. PP compound **3** was incubated with KDM5B and the resulting MS spectra showed a minor set of peaks relating to unmodified KDM5B ( $m/z$  55,153) and a major peak relating to protein-inhibitor adduct with the correct mass shift ( $\Delta m/z$  379) (Figure 3). Compounds **4-6** were incubated with KDM4B and KDM5C under the same conditions as with KDM5B (Figure S2) and MS showed only unmodified protein peaks as expected for these proteins that do not contain a cysteine at C480 as in KDM5B. The specific covalent binding to KDM5B explains the improved selectivity over KDM5C and KDM4B compared to non-covalent inhibitor **2**.

Digestion of the protein-inhibitor adduct and further analysis by LCMS/MS allowed mapping of the inhibitor reactive residue, confirming that compound **3** was binding specifically to the desired C480 and not to other cysteines in KDM5B (Figure 3 green box) in agreement with X-ray crystal structure (Figure 1C).

Similarly, incubation of **7** with KDM5B resulted in protein MS peaks from addition of the compound ( $\Delta m/z$  351) (Figure 3). LCMS/MS analysis showed that although there was good coverage of the native



**Figure 3.** Covalent binding by MS and peptide mapping of KDM5B after treatment with compounds **3** and **7**. Intact mass spectra in large light blue boxes and observed peptides for native protein (red box and lines), compound **3** adduct (green box and lines) and compound **7** adduct (dark blue box and lines)

protein (>90%) including 3 peptides containing C497 (Figure 3 red box), with the inhibitor modified KDM5B, the peptide containing the target C497 was the only sequence that was not observed (Figure 3 dark blue box). As this peptide was observed in the unmodified protein, the addition of the compound appears to have prevented the detection of the peptide in the covalent adduct suggesting that C497 was the site of binding.

With confirmation of potent and selective binding to recombinant KDM5 targets, we wanted to show cellular target engagement. We developed a PZ-based cell-permeable fluorescent tracer assay to quantify the engagement of compounds with KDM targets that are fused to NanoLuciferase.<sup>[15]</sup> An aliphatic amino-terminal linker on a PZ derivative was attached

to the fluorescent dye NanoBRET<sub>590</sub>® to generate a tracer compound that interacts with the NanoLuc-fused KDMs (Figure S3).

The tracer was tested in transfected NanoLuc-KDM4s, KDM5s and KDM6B in the presence of compound **1**, showing that the tracer produced significant BRET signal in a dose-dependent manner with all the KDM5 family members (KDM5A-D), but no BRET signal for any of the KDM4s or KDM6B, demonstrating the selectivity of the tracer (Figure S4). Cellular activity of the most relevant PP and PZ compounds was then evaluated (Table 1, Figure 4A, Figure S5). In the PZ series, phenyl-containing compounds **8** and **9**, showed the best activity in cells (0.53 and 0.30 μM). However, compounds **7**, **10** and **11** showed micromolar IC<sub>50</sub> values, which are more than a 100-fold weaker than their *in vitro* activity, probably due to their low logP and poor cell permeability.

Compound **4** was the only example of the PP series that showed some activity in cells, with an IC<sub>50</sub> of 10.6 μM, in the same range as the non-covalent compound **2** (IC<sub>50</sub> 8.8 μM). For both the PP and PZ compounds, the similar cellular potency compared to their non-covalent analogues can be explained due to their high polarity as measured clogP and poor cell permeability as measured by Caco-2 (Table 1). Non-covalent compounds **CPI-455**, **2** and **3** have good permeability (Caco-2 AB 7.5–17.2 × 10<sup>-6</sup> cm/s) but despite being much less cell permeable (Caco-2 AB <1.5 × 10<sup>-6</sup> cm/s), the covalent compounds are as potent in cells as their non-covalent analogues, presumably due to their better 2-OG competition.

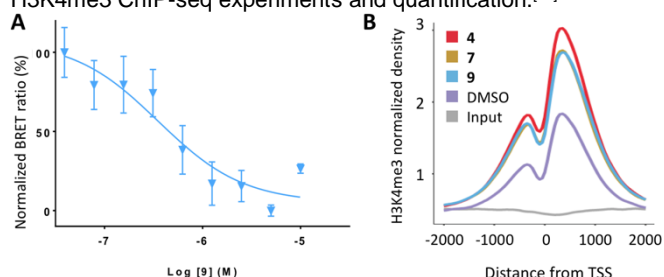
**Table 1.** Biochemical and cellular properties of the PZ and PP series

Cmpd	clogP [a]	P <sub>app</sub> [b]	IC <sub>50</sub>		2-OG shift [e]	KDM5B	
			(2-OG 1 μM) [d]	(2-OG 1 mM) [d]		nano- BRET IC <sub>50</sub> (μM)	ChIP-seq conc (μM)
<b>2</b>	1.1	11.8	0.003	0.506	169	8.8	ND
<b>4</b>	-1.5	<1.5	0.009	ND	ND	10.6	ND
<b>5</b>	-0.94	<1.5	0.01	0.11	11	>30	2.0
<b>6</b>	-0.58	<1.5	0.004	0.094	26	>30	ND
<b>CPI-455</b>	1.3	17.2 <sup>[c]</sup>	0.003 <sup>[c]</sup>	ND	2.0 <sup>[c]</sup>	0.40	ND
<b>1</b>	0.65	7.5 <sup>[c]</sup>	0.015	0.377	3.9	0.34	ND
<b>7</b>	-0.74	<0.76	0.007	0.010	2.0	2.5	2.0
<b>8</b>	0.68	<0.76	0.049	0.041	1.8	0.53	2.0
<b>9</b>	0.92	<0.76	0.065	0.059	1.9	0.30	ND
<b>10</b>	-0.89	<0.76	0.017	0.017	2.4	5.5	ND
<b>11</b>	-1.3	<1.4	0.009	0.008	1.3	8.6	ND

[a] Calculated with ChemDraw version 16.0.1.4. [b] Determined in Caco-2 cells. Values are A to B (10<sup>-6</sup> cm/s). [c] Previously reported values in MDCK cells.<sup>[9-10]</sup> [d] AlphaScreen *in vitro* activity in KDM5B. [e] Calculated as ratio of IC<sub>50</sub>'s determined at 2-OG concentrations of 1 mM and 1 μM.

Immunofluorescence-based assays have been previously used to analyse global changes in H3K4me3 as a measure of KDM5 activity, but the global change can be affected by other factors such as cytotoxicity.<sup>[16]</sup> We therefore employed chromatin immunoprecipitation and sequencing (ChIP-seq) as a more accurate method to quantify the H3K4me3 level at transcriptional start sites (TSS) as a read-out for inhibition of KDM5 activity.

Cytotoxicity of the compounds was first assessed to show that with the exception of **5**, compounds were not cytotoxic in HEK cells (Figure S6). Compounds **4**, **7** and **9** were selected for H3K4me3 ChIP-seq experiments and quantification.<sup>[17]</sup>



**Figure 4.** A) Cellular activity of compound **9** in by NanoBRET assay; B) Distribution of H3K4me3 around transcriptional start sites (TSS); Densities of ChIP-seq reads for H3K4me3 and input in HEK293 cells treated with DMSO and compounds **4**, **7**, **9**.

After sequencing and normalisation, read coverage was evaluated and coverage plots were plotted across all genes revealing significant increases of H3K4me3 levels around TSS (Figure 4B). ARID3B, known to be highly expressed in HEK cells,<sup>[18]</sup> was chosen as a representative gene and all three compounds doubled H3K4me3 levels (Figure S7).

In conclusion, covalent inhibitors in the PP and PZ series that target distinctive cysteine residues in the KDM5 family has been shown to target lysine demethylases to overcome high cellular 2-OG levels and improve KDM selectivity. Target engagement in cells was demonstrated using a novel NanoBRET assay and functional effects of the covalent inhibitors was shown by increase in H3K4me3 at TSS in HEK293 cells.

## Acknowledgements

The SGC is a charity (number 1097737) funded by AbbVie, Bayer Pharma AG, Boehringer Ingelheim, Canada Foundation for Innovation, Eshelman Institute for Innovation, Genome Canada, Innovative Medicines Initiative (EU/EFPIA) [ULTRA-DD grant no. 115766], Janssen, Merck KGaA Darmstadt, MSD, Novartis Pharma AG, Ontario Ministry of Economic Development and Innovation, Pfizer, São Paulo Research Foundation-FAPESP, Takeda, and Wellcome [106169/ZZ14/Z]. Funding is from the European Union's Horizon 2020 research and innovation programme under the Marie Skłodowska-Curie grant agreement No 744389, supporting S.V.R. fellowship (TEDCIP). M.W. was supported by the EPSRC Centre for Doctoral Training in Synthesis for Biology and Medicine (EP/L015838/1). Funding was received from the Oxford NIHR BRC, Arthritis Research UK (grant 20522) and the People Programme (Marie Curie Actions) of the EU's Seventh Framework Programme (FP7/2007-2013) (UO) under REA grant n° [609305].

**Keywords:** covalent inhibitors • epigenetics • KDM5 • lysine demethylase

- [1] A. J. Bannister, R. Schneider, T. Kouzarides, *Cell* **2002**, *109*, 801-806.
- [2] L. J. Walport, R. J. Hopkinson, C. J. Schofield, *Current Opinion in Chemical Biology* **2012**, *16*, 525-534.



- 
- [3] R. J. Klose, E. M. Kallin, Y. Zhang, *Nature Reviews Genetics* **2006**, *7*, 715-727.
- [4] M. Han, W. Xu, P. Cheng, H. Jin, X. Wang, *Oncotarget* **2017**, *8*, 8980-8991.
- [5] M. H. Stewart, M. Albert, P. Sroczyńska, V. A. Cruickshank, Y. Guo, D. J. Rossi, K. Helin, T. Enver, *Blood* **2015**, *125*, 2075-2078.
- [6] a) J. Liang, et al., *Bioorganic & Medicinal Chemistry Letters* **2017**, *27*, 2974-2981; b) T. E. McAllister, K. S. England, R. J. Hopkinson, P. E. Brennan, A. Kawamura, C. J. Schofield, *J Med Chem* **2016**, *59*, 1308-1329.
- [7] K. Thirstrup, S. Christensen, H. A. Moller, A. Ritzen, A. L. Bergstrom, T. N. Sager, H. S. Jensen, *Pharmacol Res* **2011**, *64*, 268-273.
- [8] Z. A. Knight, K. M. Shokat, *Chem Biol* **2005**, *12*, 621-637.
- [9] M. Vinogradova, et al., *Nat Chem Biol* **2016**, *12*, 531-538.
- [10] J. Liang, et al., *Bioorg Med Chem Lett* **2016**, *26*, 4036-4041.
- [11] V. Bavetsias, et al., *J Med Chem* **2016**, *59*, 1388-1409.
- [12] J. Singh, R. C. Petter, T. A. Baillie, A. Whitty, *Nat Rev Drug Discov* **2011**, *10*, 307-317.
- [13] B. F. Krippendorff, R. Neuhaus, P. Lienau, A. Reichel, W. Huisinga, *J Biomol Screen* **2009**, *14*, 913-923.
- [14] A. Kawamura, A. Tumber, N. R. Rose, O. N. King, M. Daniel, U. Oppermann, T. D. Heightman, C. Schofield, *Anal. Biochem.* **2010**, *404*, 86-93.
- [15] a) T. Machleidt, et al., *ACS Chem Biol* **2015**, *10*, 1797-1804; b) M. B. Robers, et al., *Nat Commun* **2015**, *6*, 10091.
- [16] S. B. Hatch, et al., *Epigenetics Chromatin* **2017**, *10*, 9.
- [17] D. A. Orlando, M. W. Chen, V. E. Brown, S. Solanki, Y. J. Choi, E. R. Olson, C. C. Fritz, J. E. Bradner, M. G. Guenther, *Cell Rep* **2014**, *9*, 1163-1170.
- [18] A. D. Rouillard, G. W. Gundersen, N. F. Fernandez, Z. Wang, C. D. Monteiro, M. G. McDermott, A. Ma'ayan, *Database (Oxford)* **2016**, 2016.
-